



Tai Timu Tai Pari

Hauraki Gulf Marine Spatial Plan

Marine farms in the Gulf

Graeme Silver

August 2014



Hauraki Gulf
Marine Park
Ko te Pataka kai
o Tikapa Moana
Te Moananui a Toi



Hauraki Gulf Forum
Tikapa Moana
Te Moananui a Toi

Ministry for Primary Industries
Manatū Ahu Matua



Department of
Conservation
Te Papa Atawhai

Waikato
REGIONAL COUNCIL
Te Kaitiaki o Te Whānau o Waikato

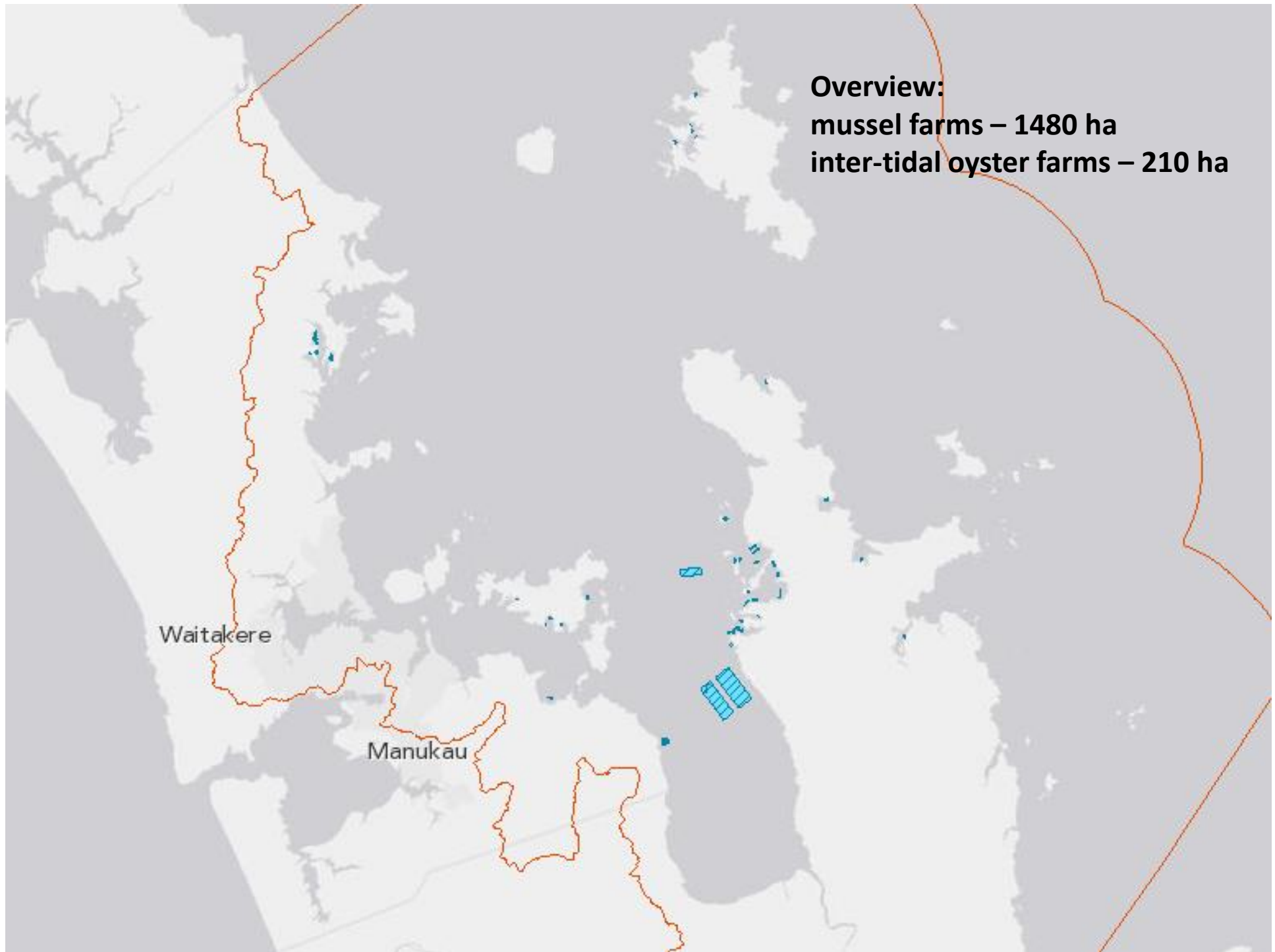
Auckland
Council
Te Kaitiaki o Tāmaki Makaurau



Overview:
mussel farms – 1480 ha
inter-tidal oyster farms – 210 ha

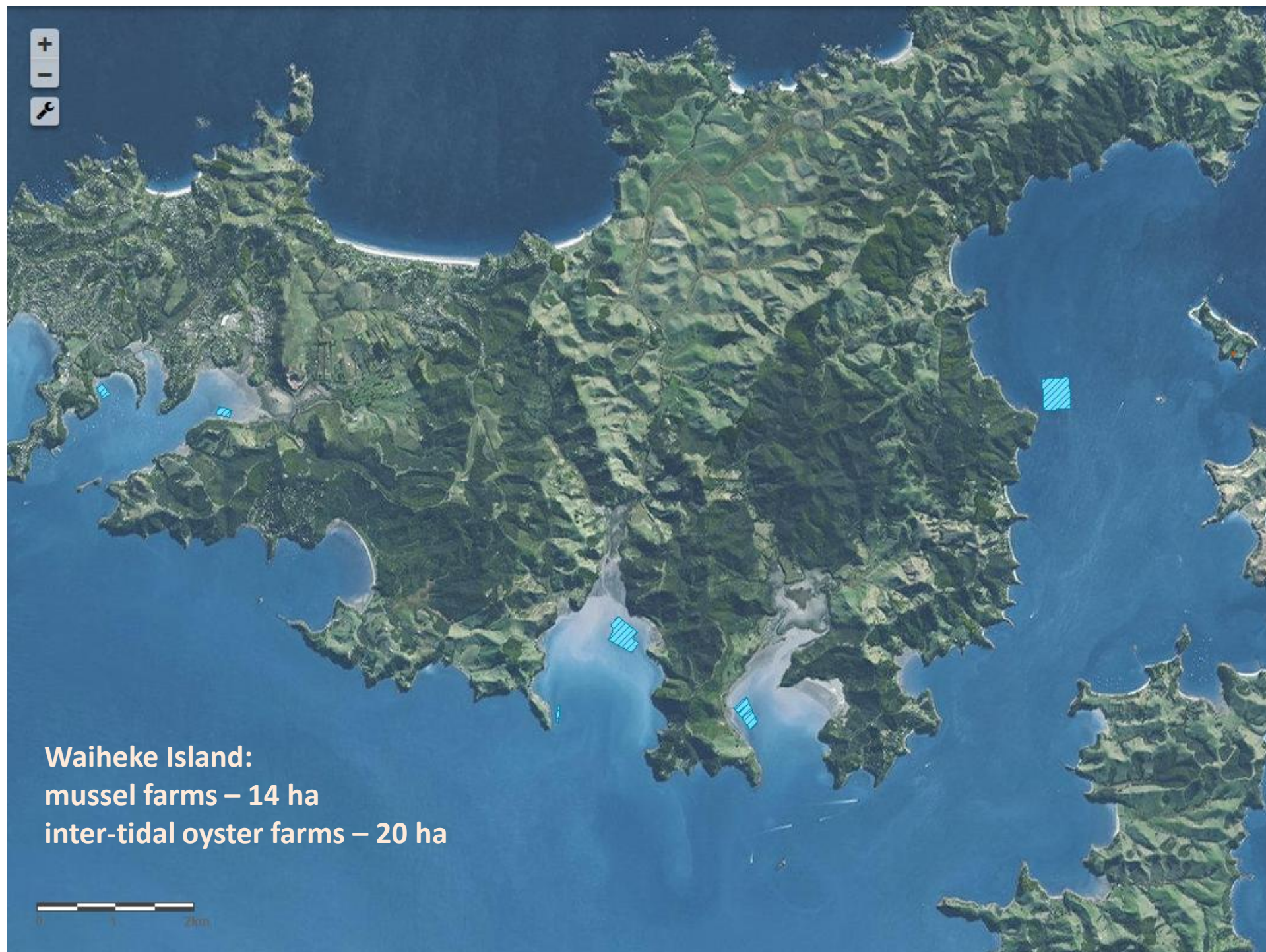
Waitakere

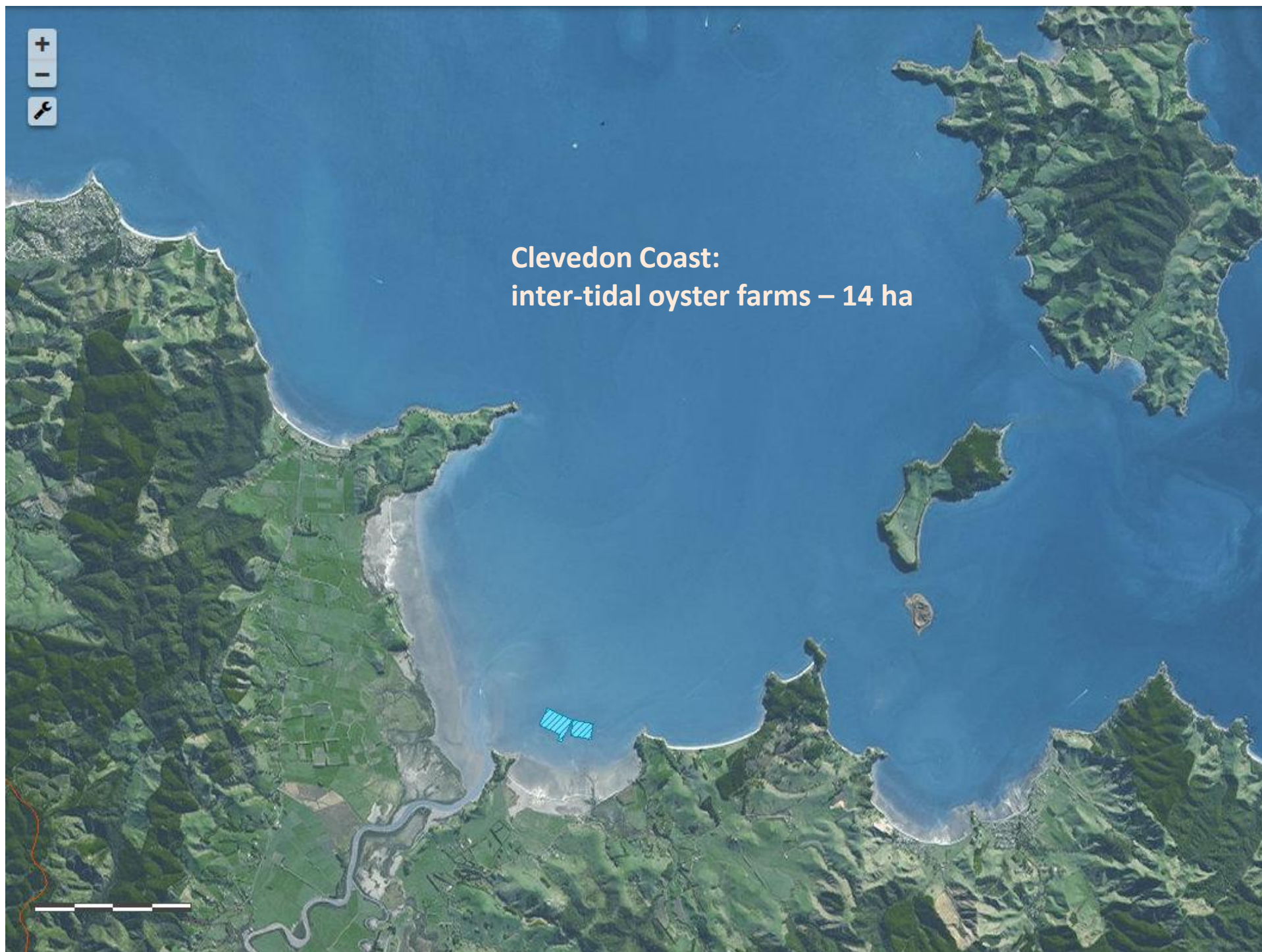
Manukau



**Mahurangi Harbour:
inter-tidal oyster farms – 108 ha**







Clevedon Coast:
inter-tidal oyster farms – 14 ha

Waimungu Point:
mussel farms – 55 ha

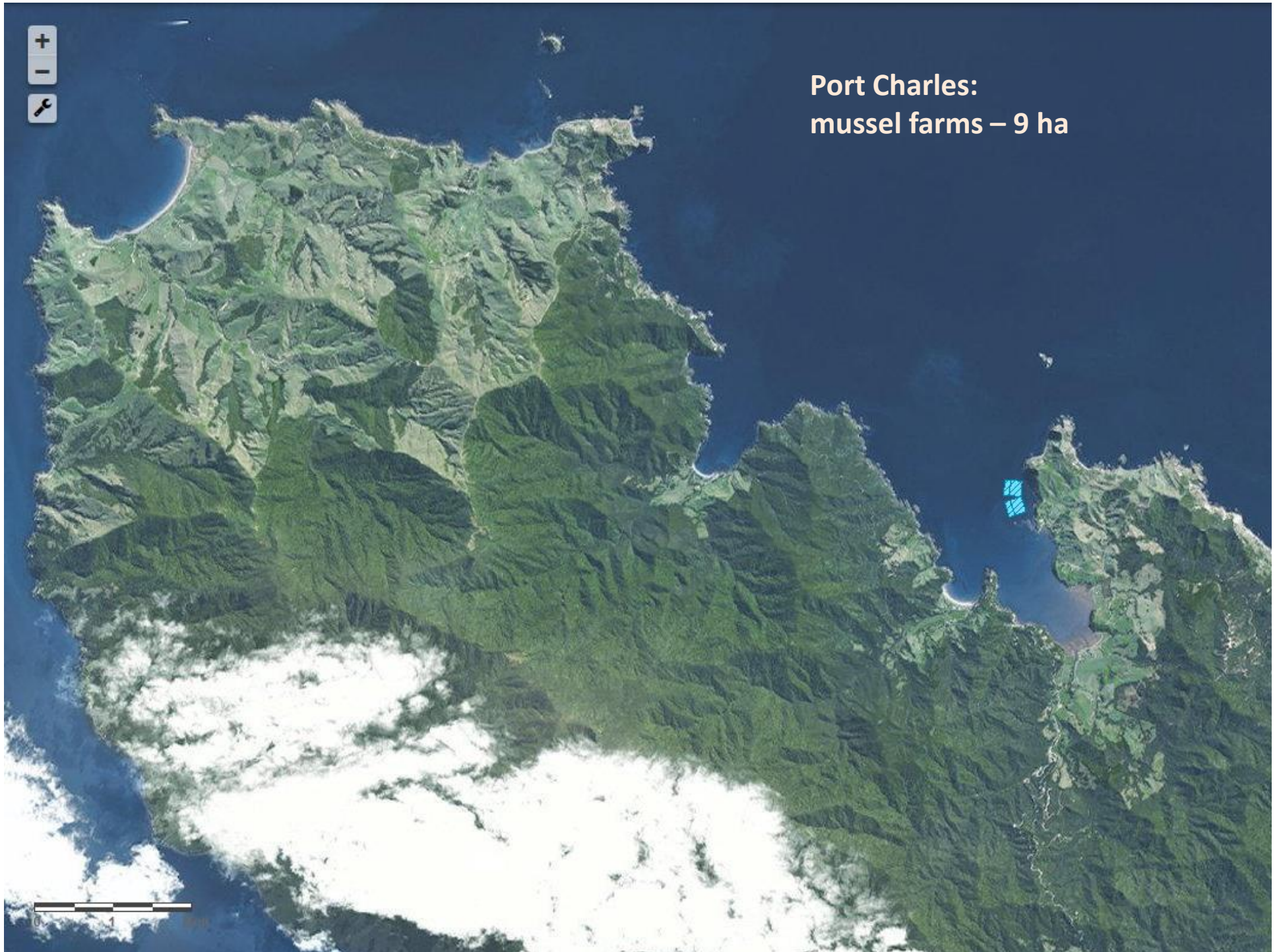




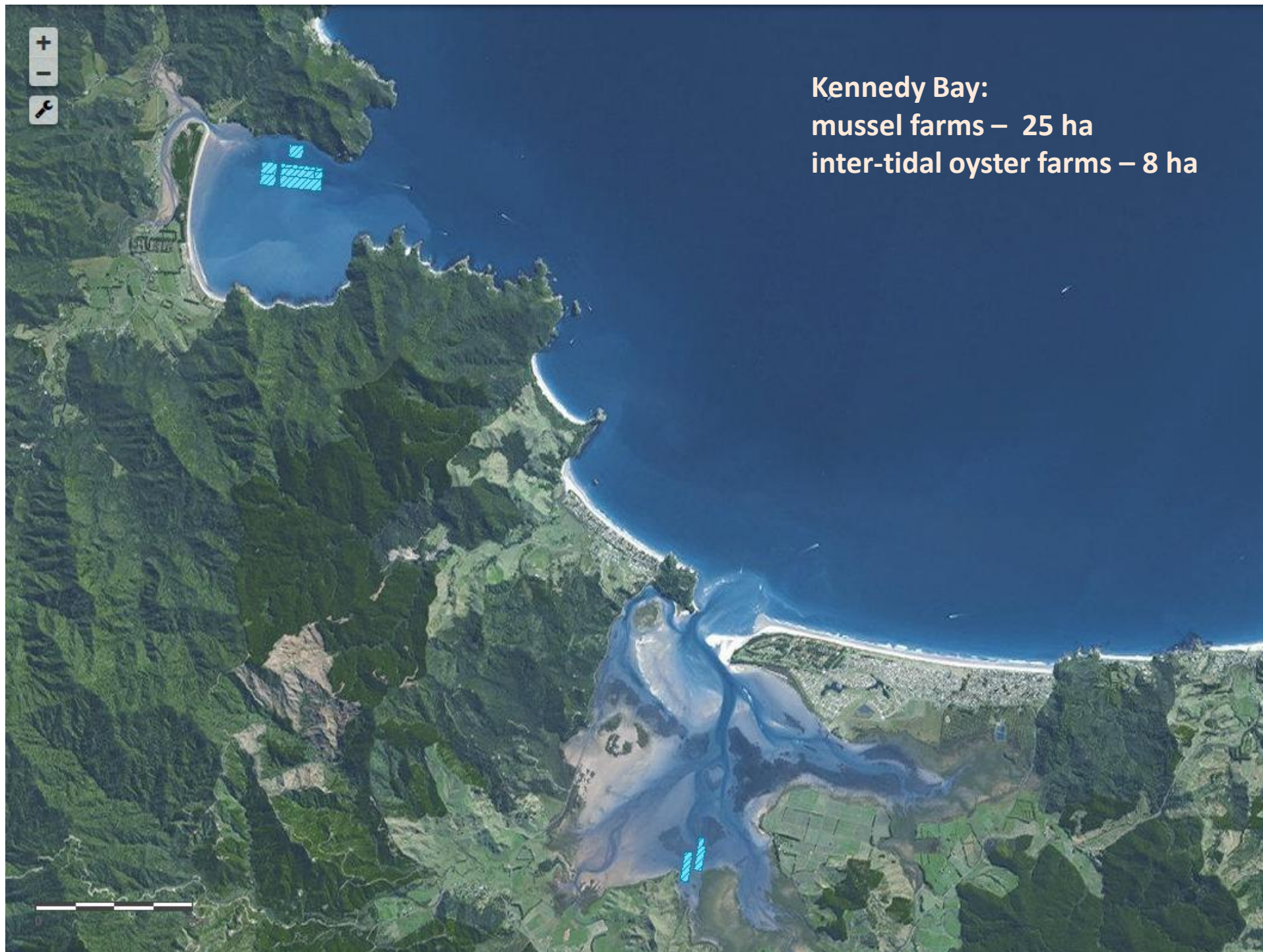
Great Barrier Island:
mussel farms – 32 ha



Port Charles:
mussel farms – 9 ha



Kennedy Bay:
mussel farms – 25 ha
inter-tidal oyster farms – 8 ha

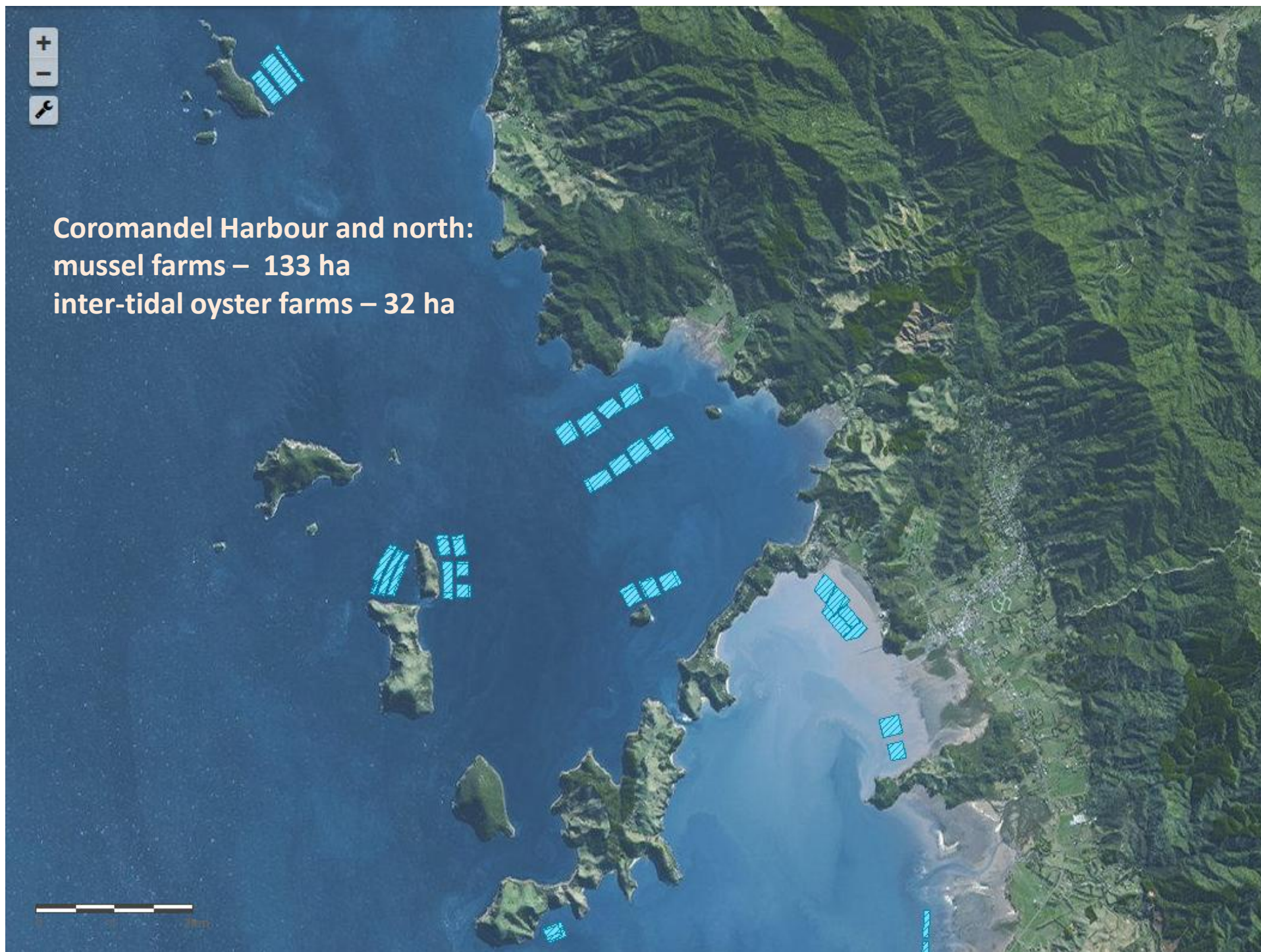




Whitianga:
inter-tidal oyster farms – 12 ha



Coromandel Harbour and north:
mussel farms – 133 ha
inter-tidal oyster farms – 32 ha

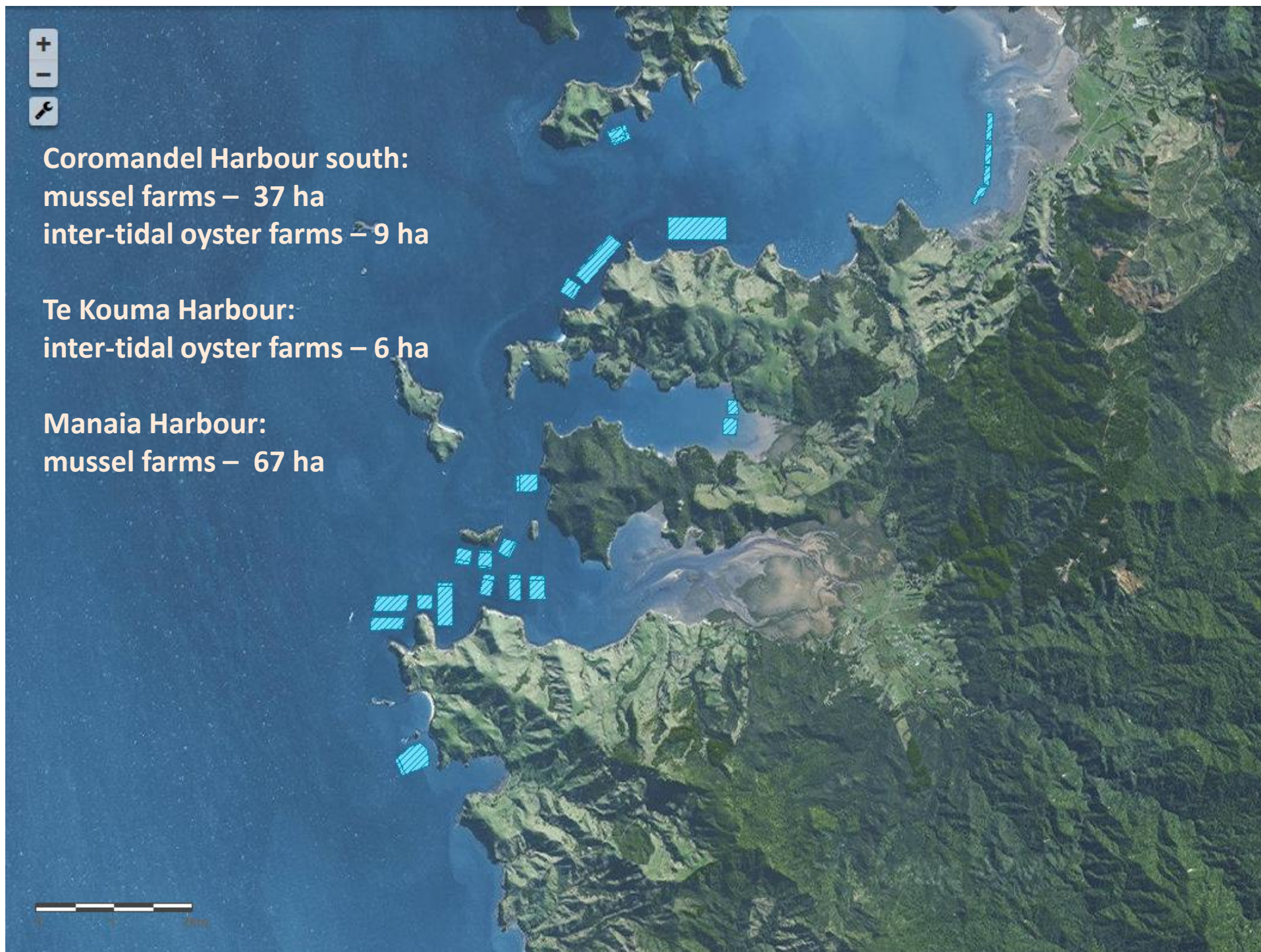




Coromandel Harbour south:
mussel farms – 37 ha
inter-tidal oyster farms – 9 ha

Te Kouma Harbour:
inter-tidal oyster farms – 6 ha

Manaia Harbour:
mussel farms – 67 ha



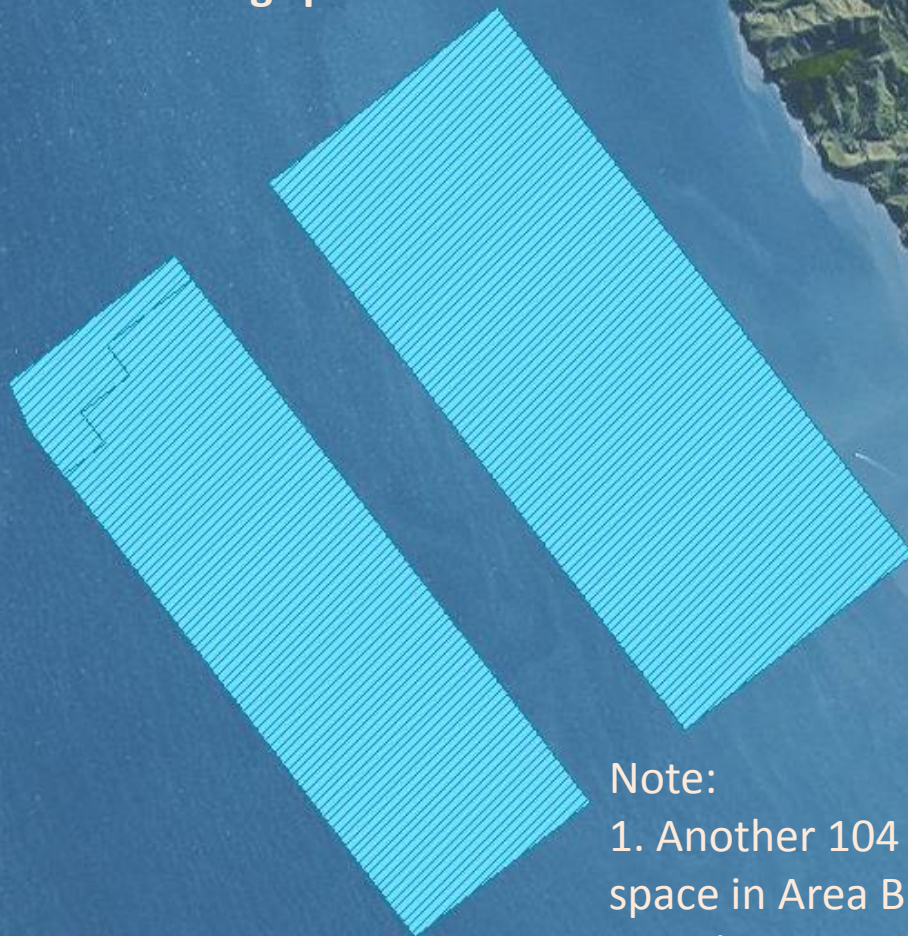


Wilson Bay marine farming zone :

Area A: mussel farms – 690 ha

Area B: mussel farms – 416 ha

Area C: fish farming space – 90 ha



Note:

1. Another 104 ha of mussel farming space in Area B has been allocated to the Maori trustee and is not yet consented.
2. Area C has not yet been consented and 20% of this area (18 ha) has been allocated to the Maori Trustee.



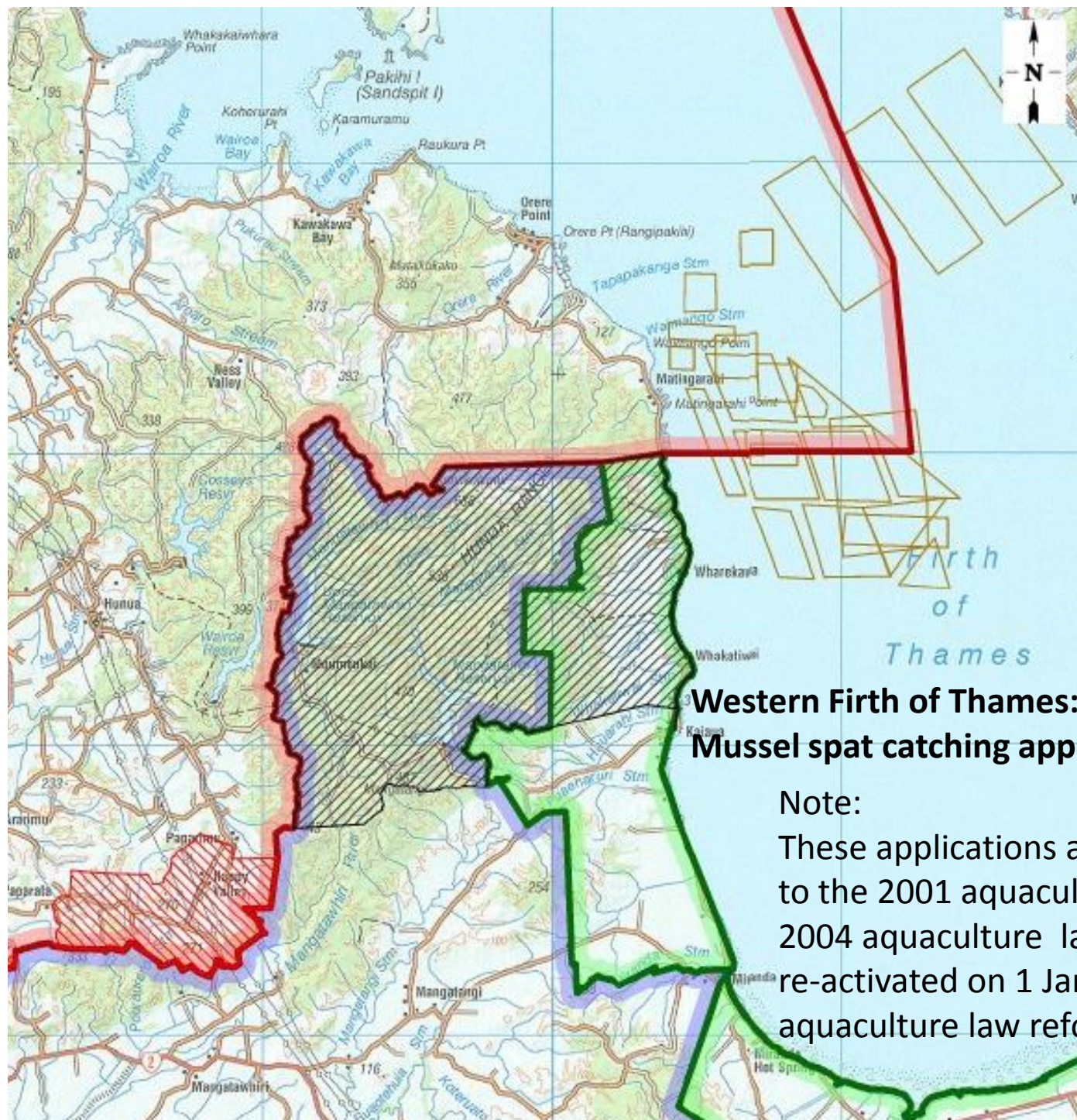


Coromandel marine farming zone:
fish farming space – 300 ha



Note:
No fish farming has yet been consented.
20% of this zone (60 ha) will be allocated
to the Maori Trustee.





**Western Firth of Thames:
Mussel spat catching applications – about 4000 ha**

Note:

These applications are currently on-hold due to the 2001 aquaculture moratorium and the 2004 aquaculture law reforms. They will be re-activated on 1 January 2015 by the 2011 aquaculture law reforms.