



Brief Overview of Coromandel Marine (finfish) Farming Zone:

Presentation to the Aquaculture Roundtable

Paul Creswell

4 November 2014

Growing and Protecting New Zealand



Rationale to provide finfish farming opportunities in NZ

- Govt supports industry's strategic goal of reaching \$1B in annual sales by 2025.
- Currently, salmon is only finfish species – 14,000 t (\$125 m) – South Island only.
- Industry must diversify aquaculture into new, high-value species to achieve \$1B goal – strategic.
- Kingfish and hapuku provide real opportunities.



Two finfish farming zones created

- 2010/2011 - Two new fish farming zones created off western Coromandel to provide industry with this strategic opportunity.

- ☐Coromandel Marine Farming Zone – 300 ha (8,000 t max)

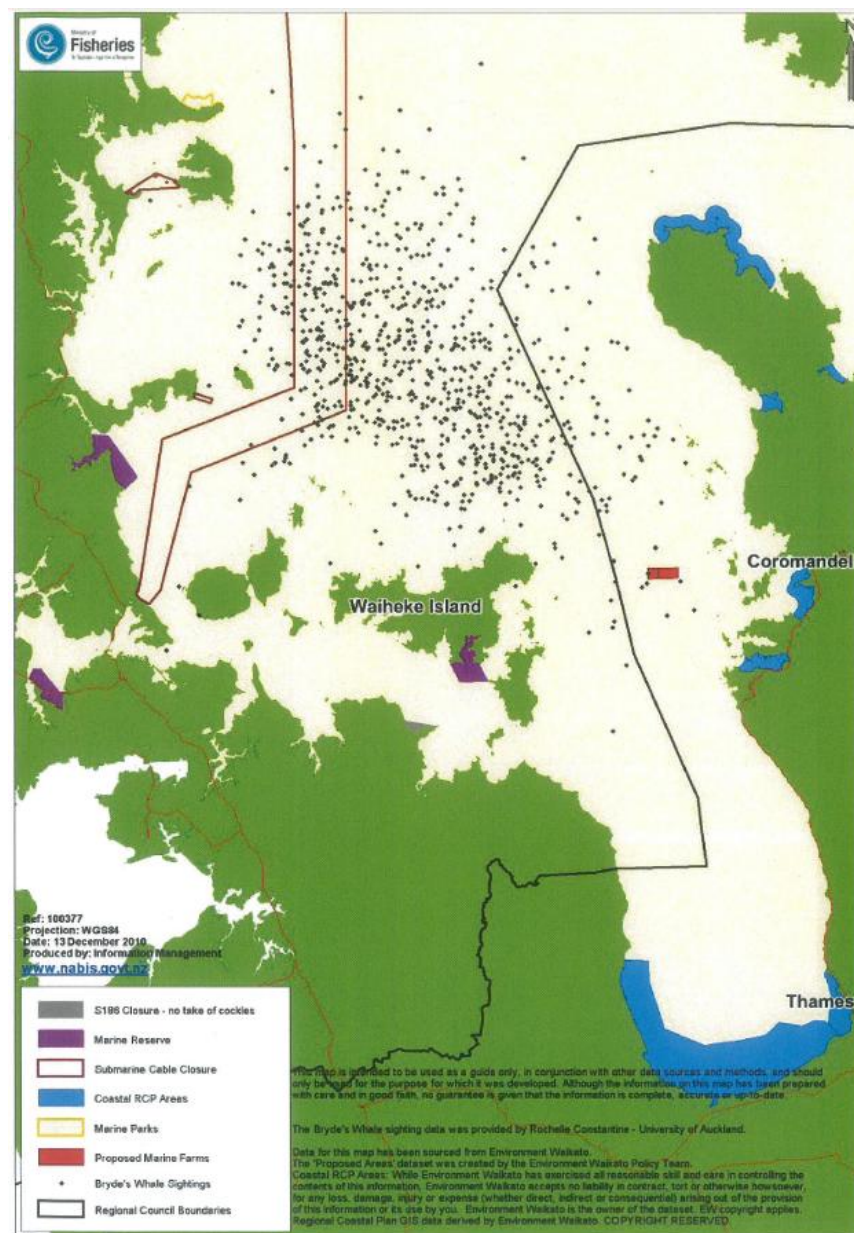
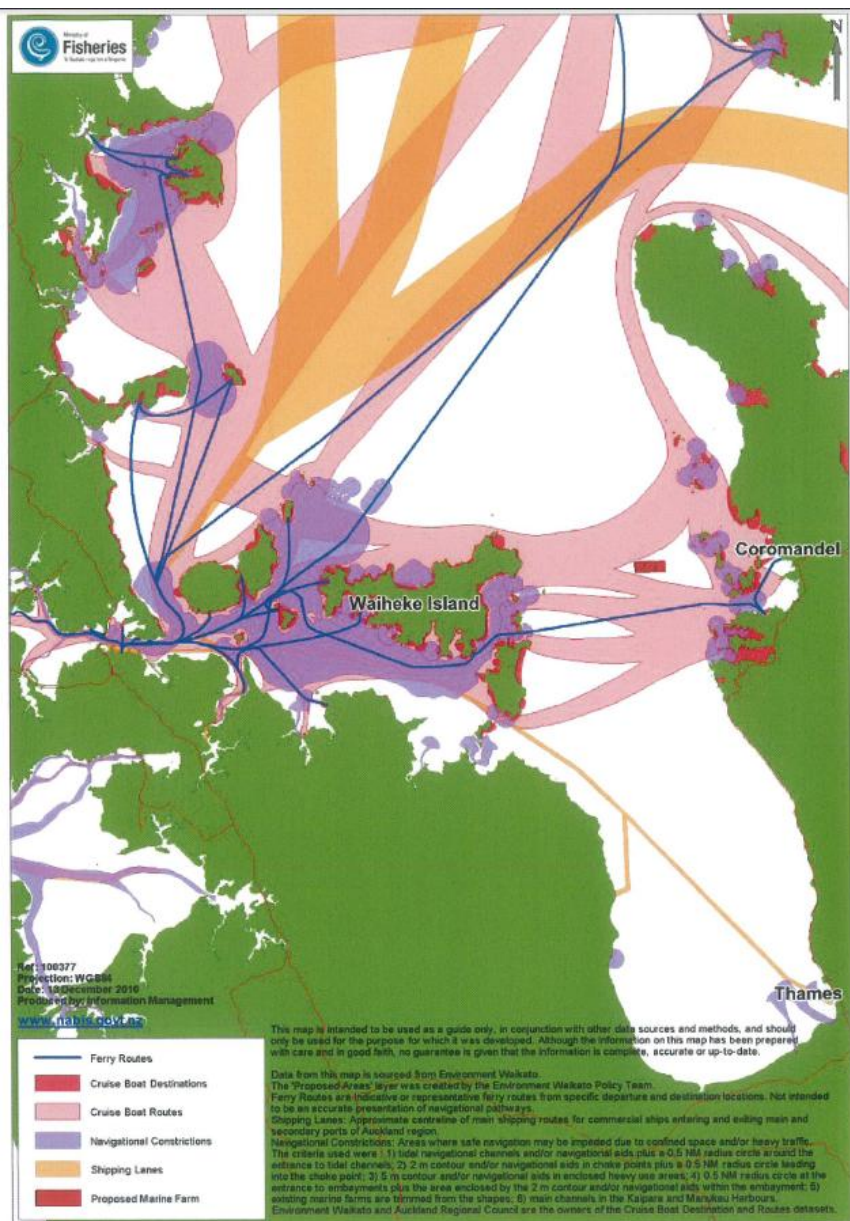
- ☐Wilson's Bay Area C – 90 ha (4,000 t max)



Coromandel Marine Farming Zone

- 300 ha (3km x 1km); 5km from Waimate Island; cannot be seen from shore.
- Site is suited for growing finfish – deep, well flushed, away from significant benthic fisheries. Outside FoT.
- Good supporting science:
 - ✓ science on maximum fish production, impacts of nutrient discharge, ecological guidance, bio-economics, cumulative effects
 - ✓ bottom type – video survey





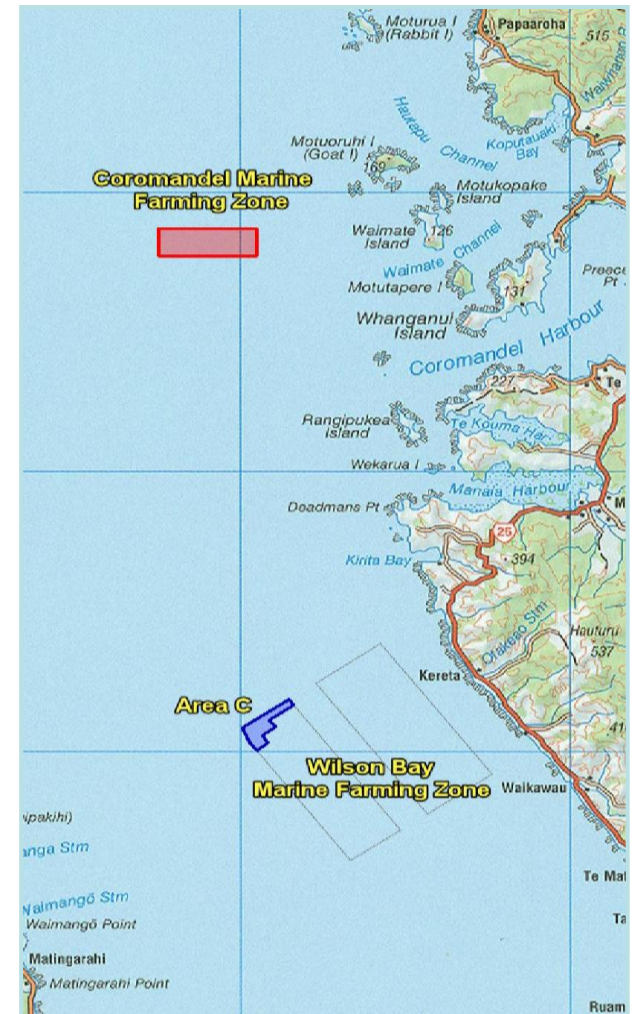
Coromandel Marine Farming Zone

- Established in late 2011 using a plan change of the WRCP – part of the law reforms process.
- Independent Ministerial Advisory Panel set up to provide recommendations to Minister.
- Public hearings and stakeholder meetings – written submissions (77 received). Independent advice.
- Good support for the zone.

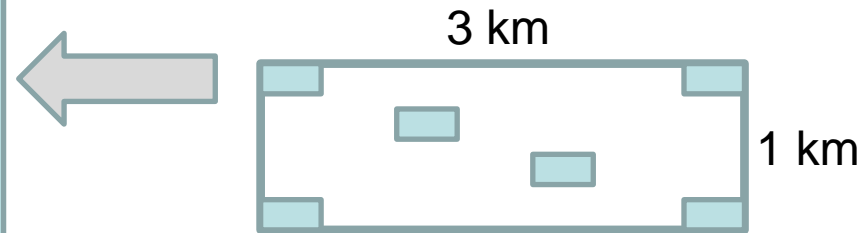
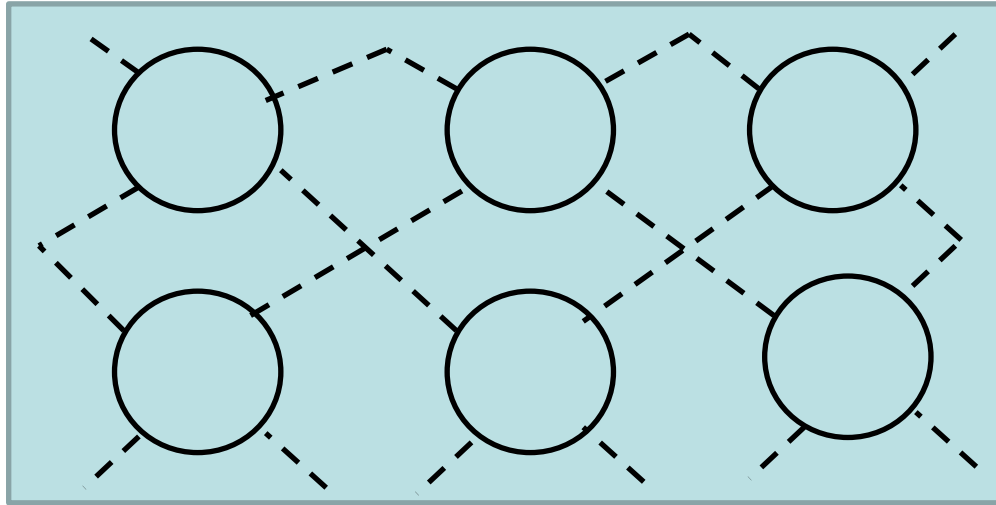


Coromandel Marine Farming Zone – production controls

- Activities managed by WRCP and consent conditions.
- Maximum production – 8000 t.
- Managed under feed and discharge limits.
- Adaptive management – 3 development phases – 4,000, 6,000, 8,000 t with ongoing monitoring and management.
- Restrictions on additives, feeds.
- Total surface cages likely to be about 17-20 ha (about 7% of total area).



Coromandel Marine Farming Zone – production controls



Polar-circle cages



Coromandel Marine Farming Zone – Allocation

- Set up primarily for fed aquaculture.
- 20% of zone allocated to Maori under Crown's Aquaculture Settlement obligations.
- 80% of zone allocated by way of open, weighted attribute tender:
 - achieve objective of zone
 - promotion of sustainable management
 - contribute to economic and social wellbeing of the region and country
 - environmental management practices
 - monetary contribution.
- Authorisation to apply only.
- Still required to apply for resource consents through RMA process.



Coromandel Marine Farming Zone – Opportunity

- 20% allocated to Maori.
- 8000 t of kingfish - \$110 million pa.
- 8000 t of hapuku - \$210 million pa.
- Potentially 900 new direct and indirect jobs.
- Potential polyculture opportunities.
- Yet to be unallocated – recession, NZKS EPA process, risk.

