

Basically, it is about  
'what goes where.' ...

Jane Taussick

and making it happen!

## The Problem

- Conflicting needs
- Conflicting information
- Multiple agencies
- No integrated approach



## The Past Solution

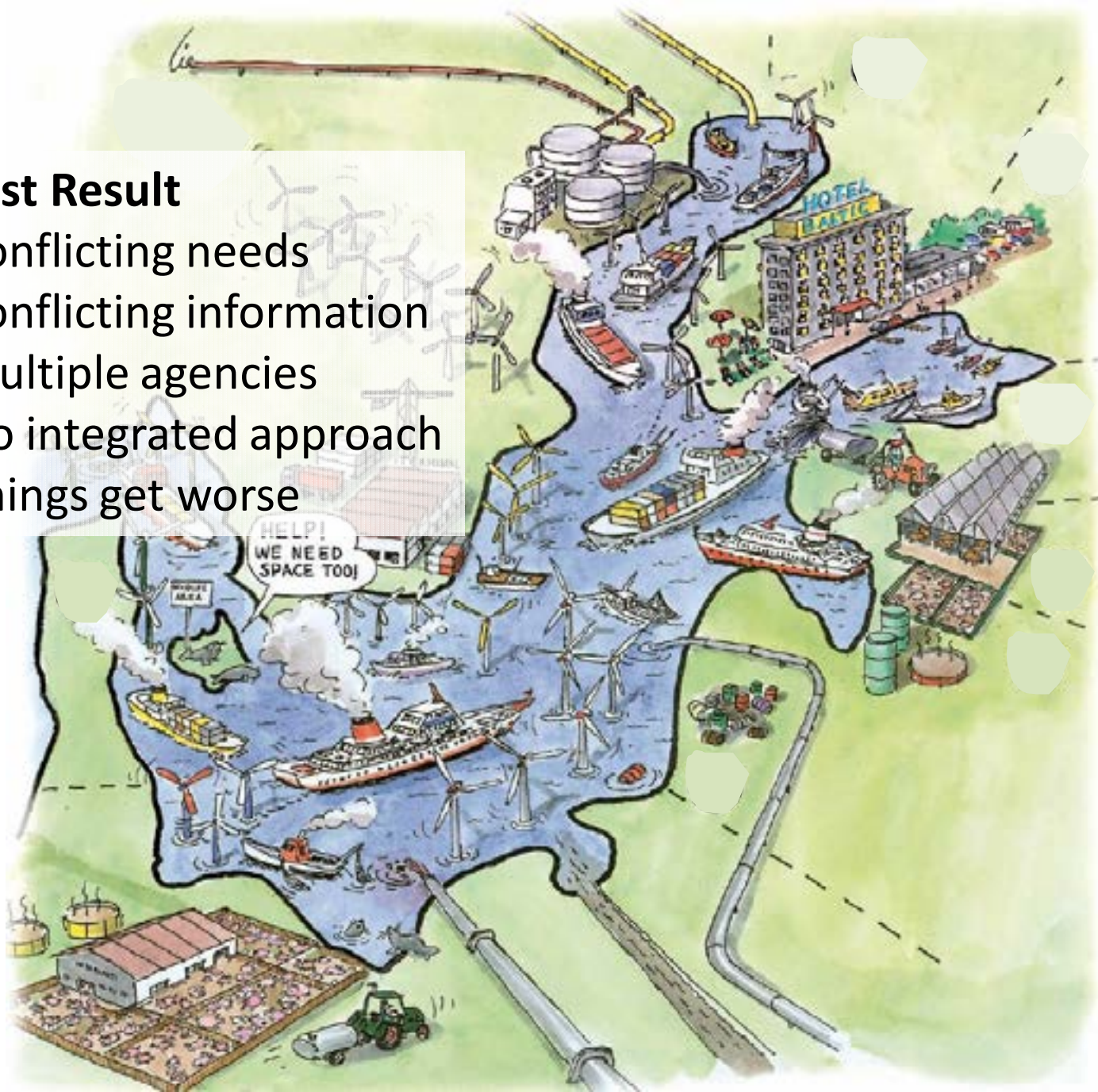
- Meetings
- Reports
- Do the easy stuff
- Look to the future for change





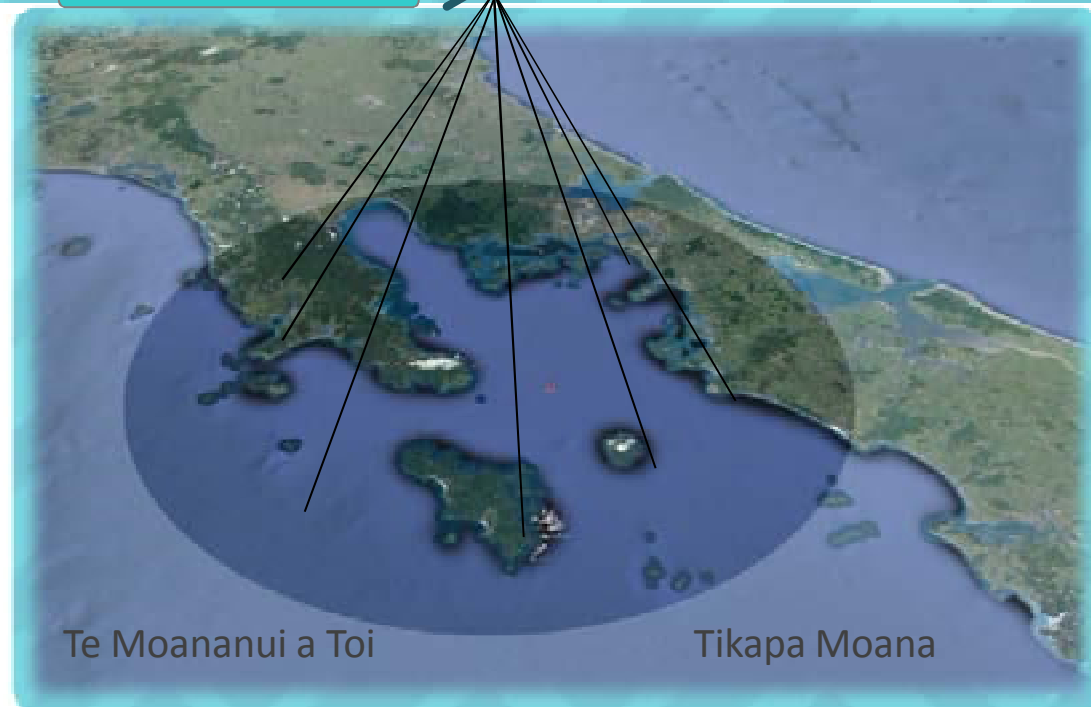
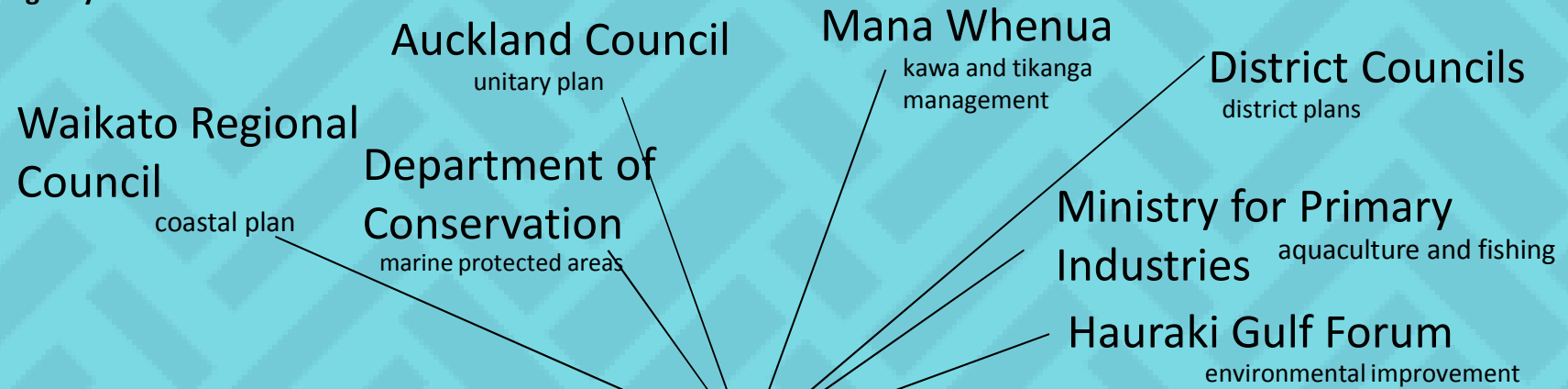
## The Past Result

- Conflicting needs
- Conflicting information
- Multiple agencies
- No integrated approach
- Things get worse



# Integrated Management – Achieving Kaitiakitanga

Agency and Main focus

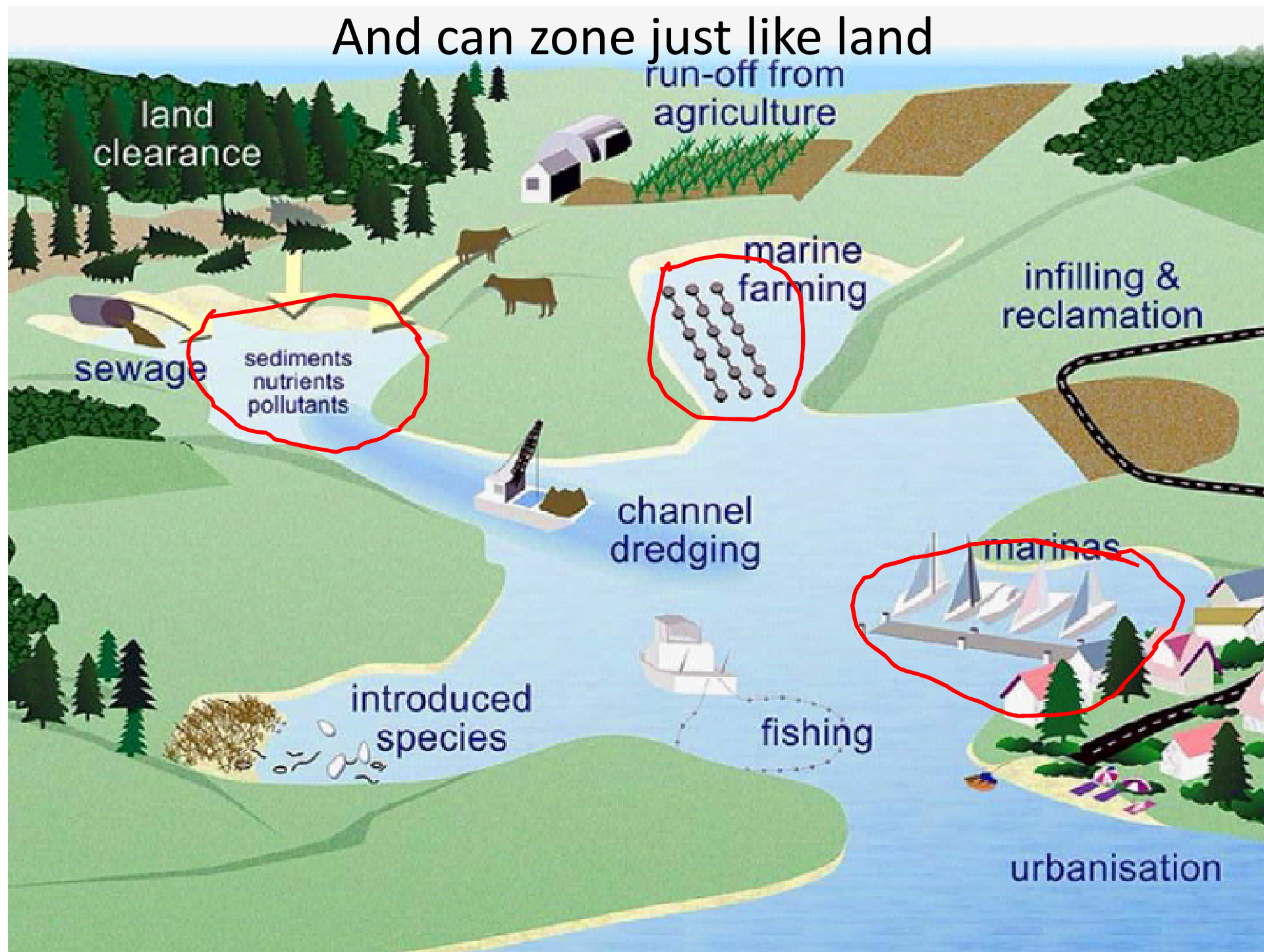


# Pressures just like land





And can zone just like land





# The Marine Spatial Plan

## **Marine planning means:**

- Effective sustainable management of marine resources.
- Setting, clear objectives and priorities, allowing strategic and efficient use of marine resources.
- Enabling consistent evidence-based decision-making.
- Allowing stakeholders with an interest in our seas and coasts to have a voice in how their marine area is managed.
- monitoring and review



# What it can do

- Guide for management of marine environment, including influences on the sea from the land
- Increase environmental health and productivity
  - Protect, restore, enhance
  - Connections within the sea and with the land
- Show areas where things can and can't happen
  - Resolve conflict for the same space to provide certainty for growth
  - Align complementary and compatible activities
  - Increase economic potential by providing space and linkages
  - Protect or enhance existing and future use



# Requirements

Need to know what you want – the issues

- Vision
- Bottom lines
- Guiding Principles
- Goals/outcomes
- Implementation actions





# Vision

- ?



# Bottom lines

E.g.

- Protect the biological productivity of the Gulf
- No degradation in water quality
- etc



# Guiding Principles

E.g.

- Collaborative
- Sustainability,
- Precautionary approach
- Kaitiakitanga
- Integration across land and sea
- Best available information
- Ecosystem based approach





# Goals/outcomes

E.g.

- Increased health and productivity
  - X ha of representative habitat protected
  - Breeding grounds at x and y protected at breeding time
- Increased water quality
  - Harbour and catchment management plans in place for x and y
  - Boat sewage pump-out facilities at x and y locations
- Increased business opportunity
  - Between x and y ha of new aquaculture space

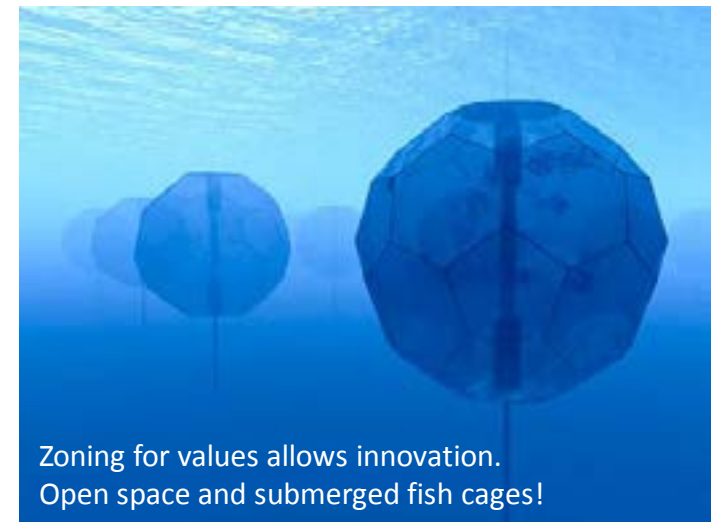
# Implementation Actions

E.g. Agencies are required to..

- implement common objectives and priorities through existing regulatory programs.
- ongoing collaborative management.
- develop cross-cutting regulation that controls agency permitting and licensing in particular areas or uses
- Be accountable, monitoring and review

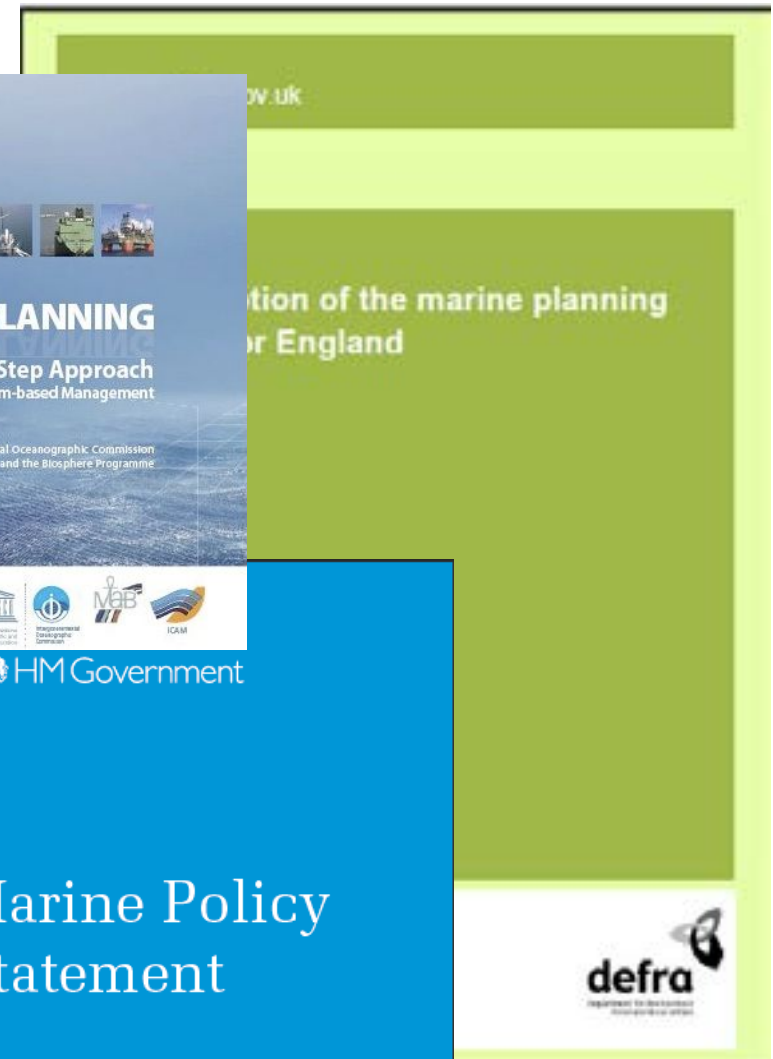
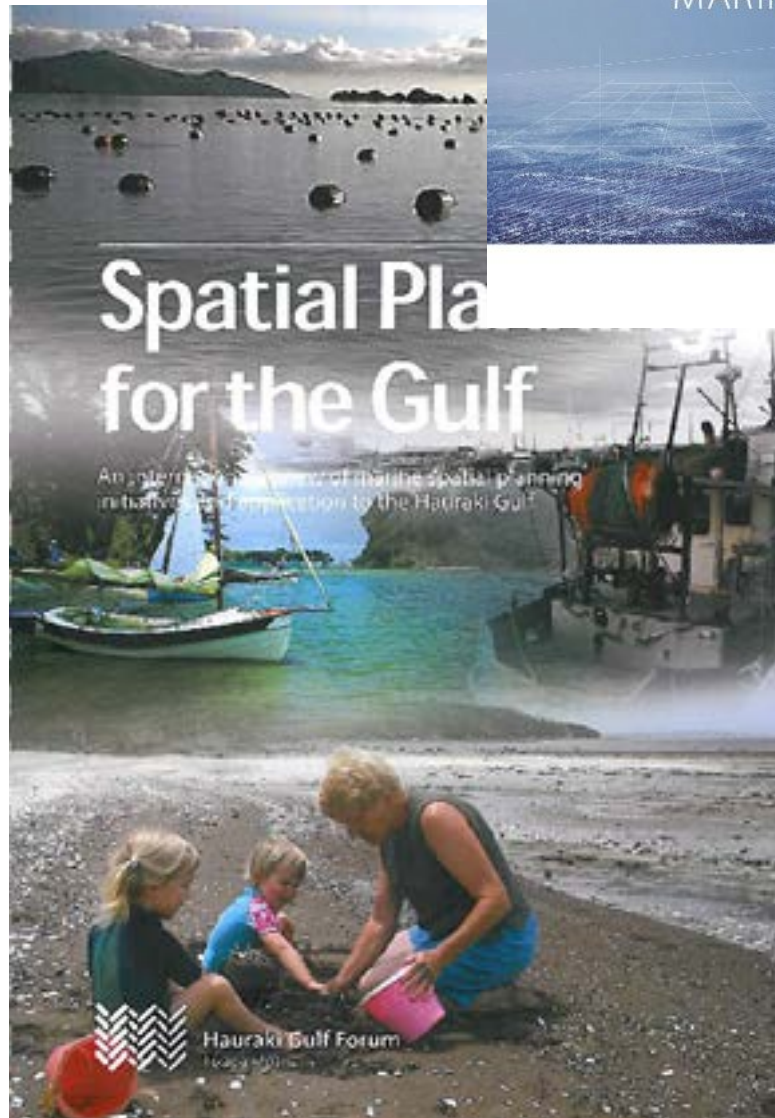
# Marine Spatial Plan content

- The issues – present and future
- The approach –information based, principles etc
- Marine zoning map(s) for values and uses, and their management requirements
- Non spatial management actions – e.g. Gulf wide
- Implementation plan
- Monitoring, review and accountability
- Other matters to consider – outside scope of plan but important

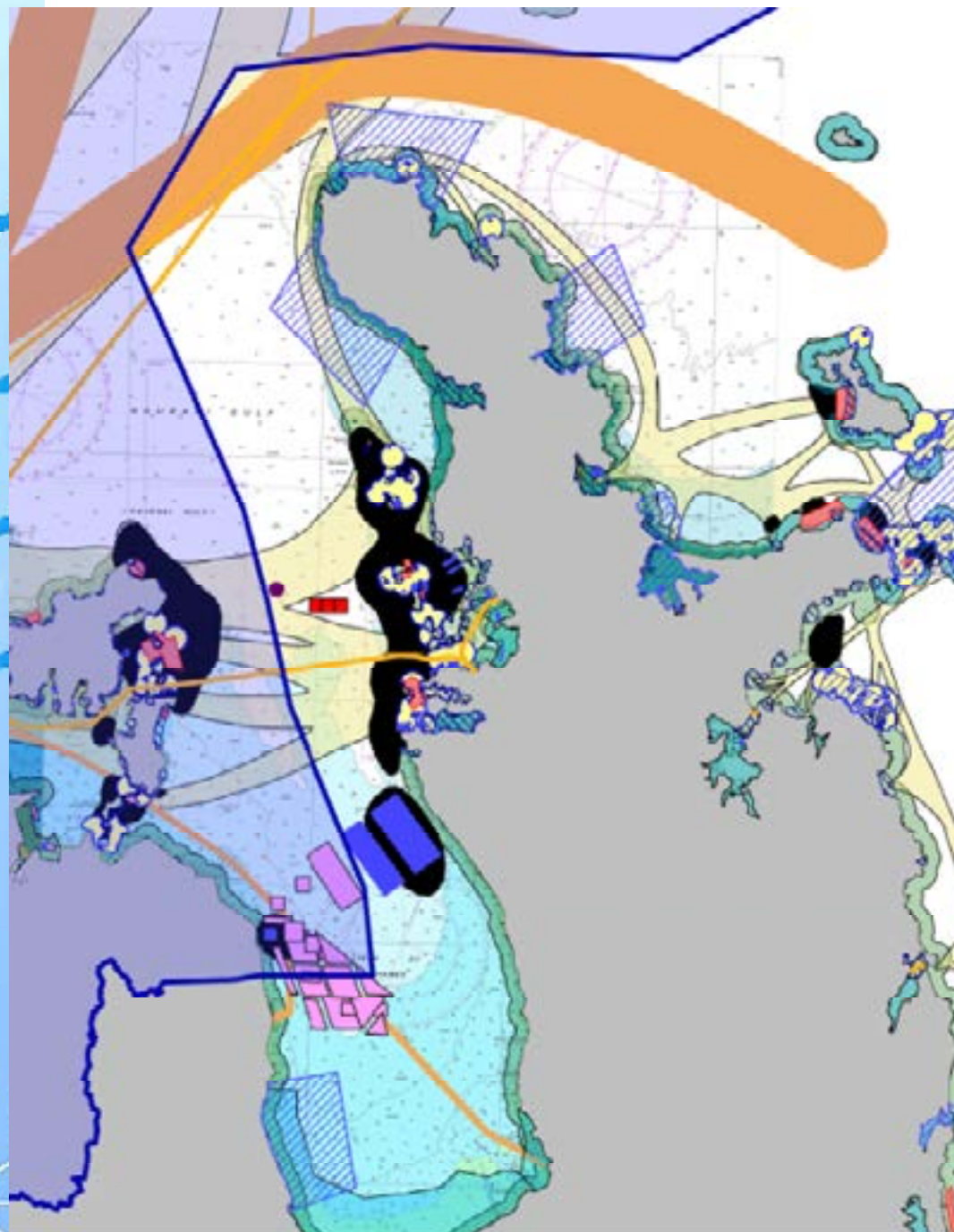




# Examples



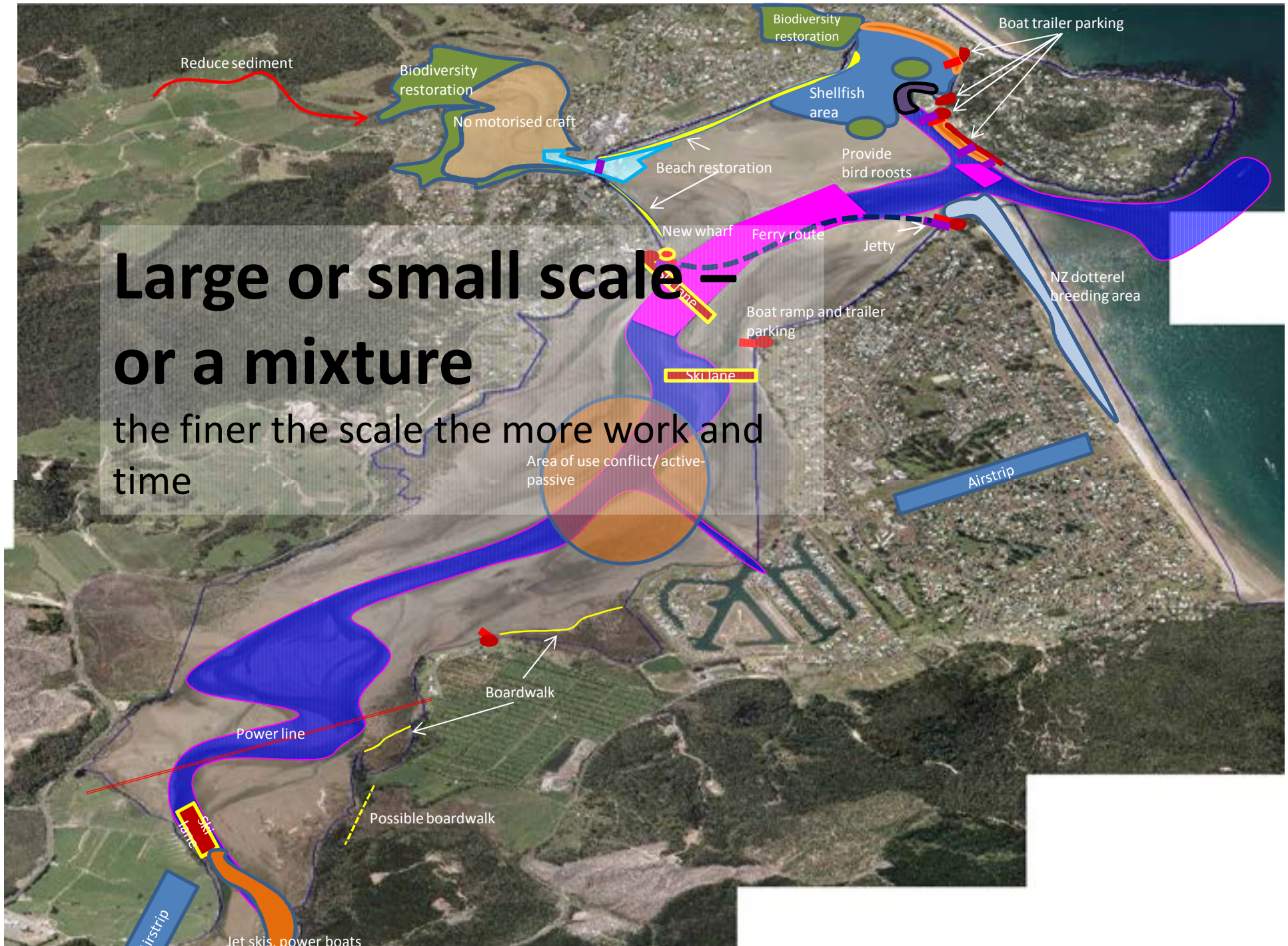
Simple or complex





# Large or small scale – or a mixture

the finer the scale the more work and  
time

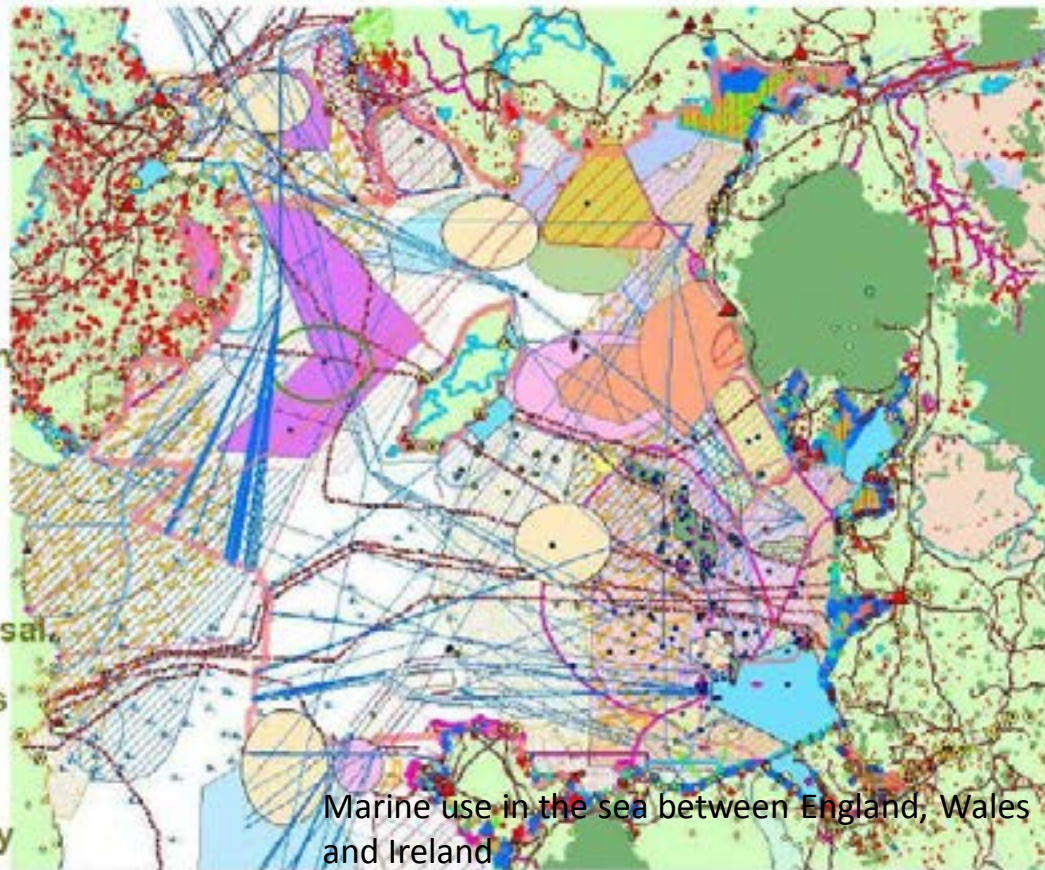




# England is doing theirs now!

## Why do we need marine planning?

- Land use
- Tourism
- Oil & Gas
- Mariculture
- Coastal Defence
- Ports & Navigation
- Military Activities
- Culture
- Conservation
- Dredging & Disposal
- Submarine Cables
- Fishing
- Renewable Energy
- Marine Recreation
- Mineral Extraction



Marine use in the sea between England, Wales and Ireland





Home View Help FAQs Documents

View

Reset Map

Context layers

- ☒ MMO Plan area boundaries
- ☐ MCZ Project boundaries
- ☐ International EEZ boundaries
- ☐ Bathymetry
- ☐ Shoreline Management Plan boundaries
- ☐ IFCA areas

Protected Areas

- ☒ International designations
- ☒ National designations

Defence and national security

Energy production and infrastructure development

- ☐ Oil and gas infrastructure
- ☐ Renewable energy infrastructure

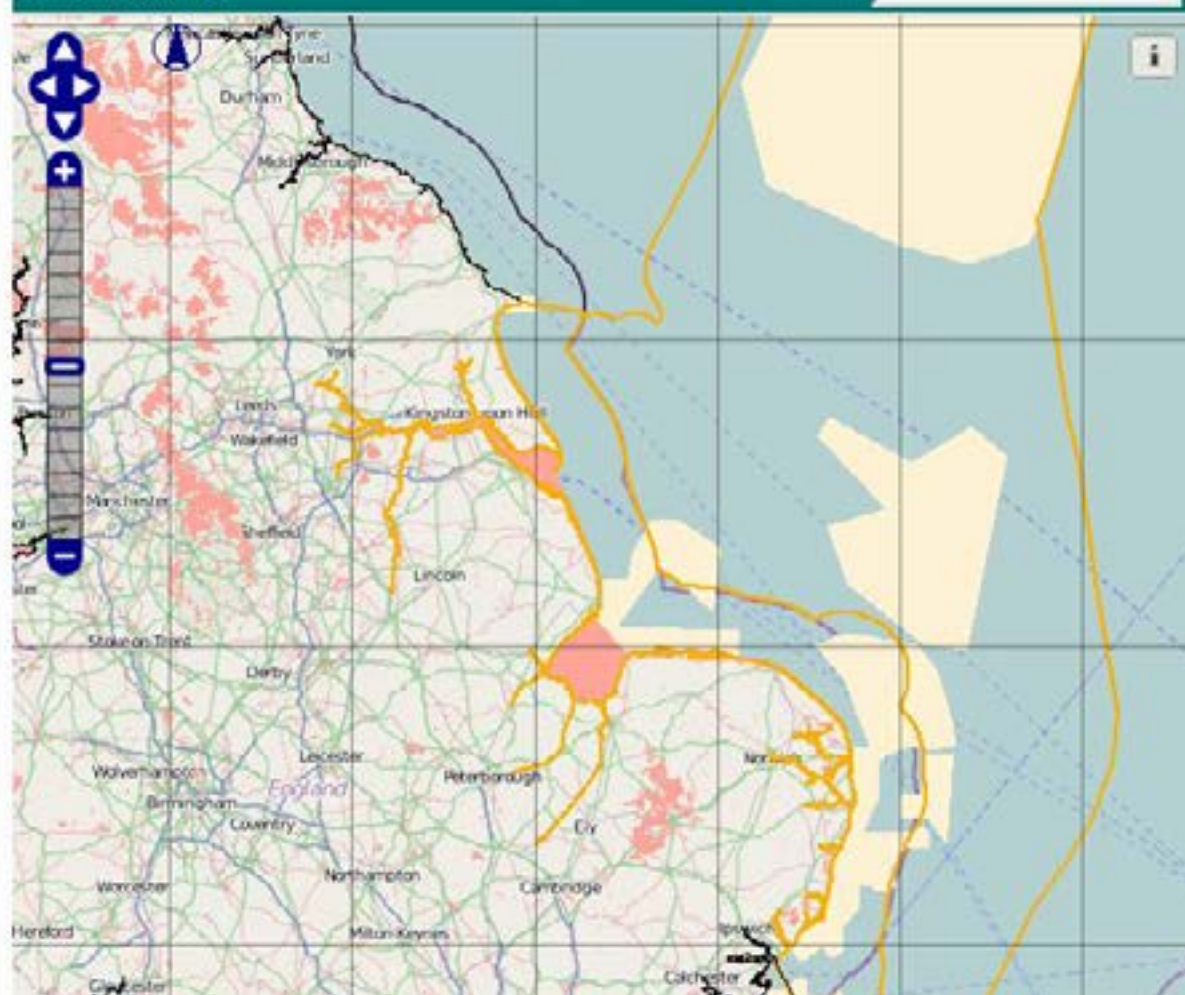
Round 1, 2, 3 and existing wind farms

Here you can use the portal to view a number of data

Login Register

View larger map

Search





<b>ACTIVITIES</b> (See <i>Zoning Plan</i> for full details)	General Use Zone	Habitat Protection Zone	Conservation Park Zone	Buffer Zone	National Park Zone	Preservation Zone
Boating, diving	Yes	Yes	Yes	Yes	Yes	No
Collecting (e.g. bêche-de-mer, shells, coral, aquarium fish)	Permit	Permit	No	No	No	No
Line fishing	Yes	Yes	Yes	No	No	No
Mesh netting	Yes	Yes	No	No	No	No
Bait netting	Yes	Yes	Yes	Yes	No	No
Trolling (for pelagic species)	Yes	Yes	Yes	Yes	No	No
Spearfishing	Yes	Yes	No	No	No	No
Pole and line tuna fishing	Permit	Permit	No	No	No	No
Trawling	Yes	No	No	No	No	No
Traditional fishing and collecting	Yes	Yes	Yes	Yes	Yes	No
Traditional hunting	Permit	Permit	Permit	Permit	Permit	No
Cruise ships	Yes	Permit	Permit	Permit	Permit	No
General shipping (other than shipping area)	Yes	No	No	No	No	No
Crayfishing	Yes	Yes	No	No	No	No
Mariculture	Permit	Permit	No	No	No	No

**Fig. 21.** A zoning approach in the far northern section of the Great Barrier Reef Marine Park.<sup>7</sup> Source: Great Barrier Reef Marine Park Authority

## Water Quality

Baiting  $\begin{cases} \text{Maintain} & \text{Bm} \\ \text{Restore} & \text{BR} \end{cases}$

Shellfish gathering  $\begin{cases} \text{Maintain} & \text{SFm} \\ \text{Restore} & \text{SFR} \end{cases}$

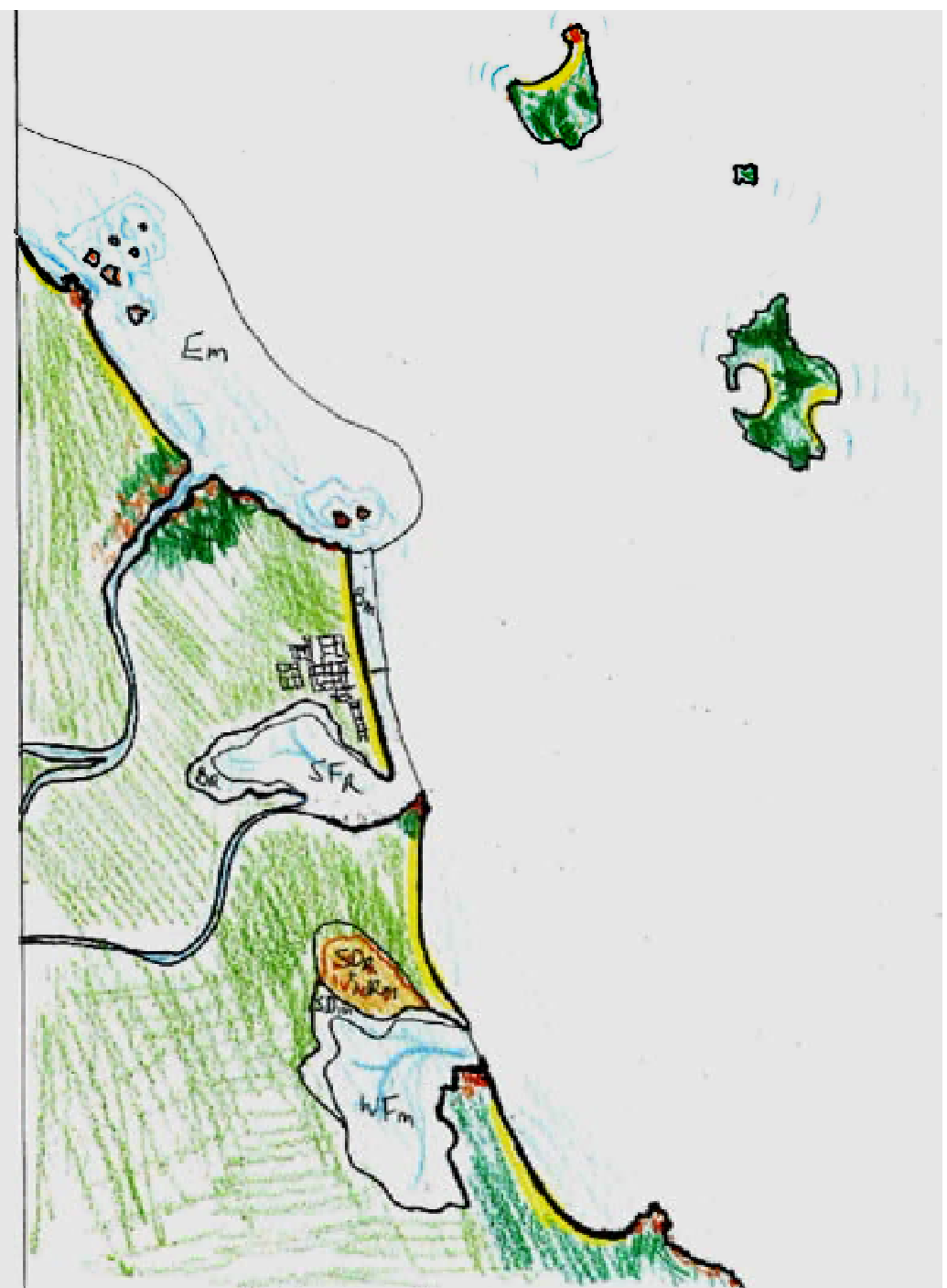
Geological  $\begin{cases} \text{Maintain} & \text{Em} \\ \text{Restore} & \text{ER} \end{cases}$

Services  $\begin{cases} \text{Maintain} & \text{SDm} \\ \text{Restore} & \text{R} \\ \text{Create} & \text{C} \end{cases}$

- Sediment filtering  $\begin{cases} \text{Maintain} & \text{NRm} \\ \text{Restore} & \text{R} \\ \text{Create} & \text{C} \end{cases}$

- Nutrient removal  $\begin{cases} \text{Maintain} & \text{WFm} \\ \text{Restore} & \text{R} \\ \text{Create} & \text{C} \end{cases}$

- Water filtering  $\begin{cases} \text{Maintain} & \text{WFm} \\ \text{Restore} & \text{R} \\ \text{Create} & \text{C} \end{cases}$



# Kai Moana

## Natural

- Shellfish gathering
- Recreational fishing

Public Commercial SG P  
Commercial SG C  
RF

## Farmed

Mussel - Current Future MC MF

Finfish - Future FF

Cultural customary use - CU

## Controlled

Setnet exclusion - N  
and of line

## Services

Breeding ground - BB  
Public Terrestrial BT

Nursery ground NG



It all fits together!







for a living planet®

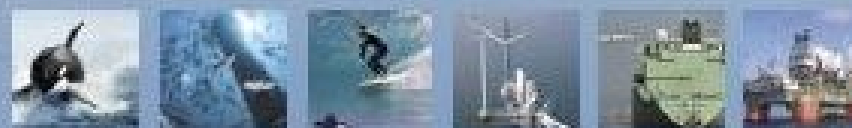
[http://www.baltseaplan.eu/downloads/WWF\\_Cartoon\\_MSP.pdf](http://www.baltseaplan.eu/downloads/WWF_Cartoon_MSP.pdf)



## MARITIME SPATIAL PLANNING IN THE HAURAKI GULF

**BECOME A  
MARITIME SPATIALIST  
WITHIN 10 MINUTES**





# MARINE **SPATIAL PLANNING**

**A Step-by-Step Approach**  
toward Ecosystem-based Management

Intergovernmental Oceanographic Commission  
and the Man and the Biosphere Programme



# Summary

- We are already successful
- We have help – community, material
- Decide what's important
- Start simple – it will soon grow
- Deliver the outcomes needed
- Ensure they happen

