

STATE OF OUR GULF 2014

Pressures

He waka eke noa – A waka which we are all in, no exceptions

BY **2031**
AUCKLAND POPULATION
WILL REACH
2 MILLION



THIS IS **60%**
OF NZ'S
PROJECTED POPULATION
GROWTH BETWEEN
2011-2031

400,000
NEW DWELLINGS

WILL BE NEEDED BY 2040



THIS IS EQUIVALENT TO **13,000**
NEW HOUSES EACH YEAR

IN THE YEAR 2012

4,260 WERE APPROVED

PUTTING PRESSURE ON

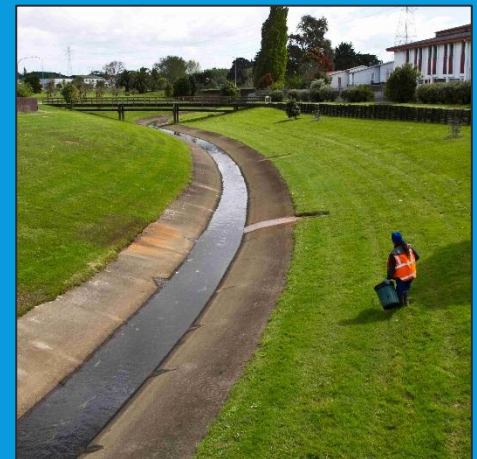
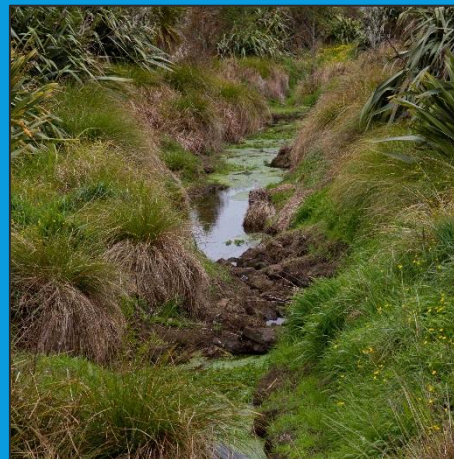
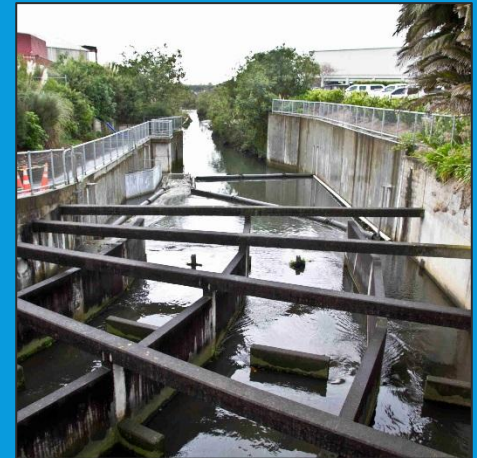
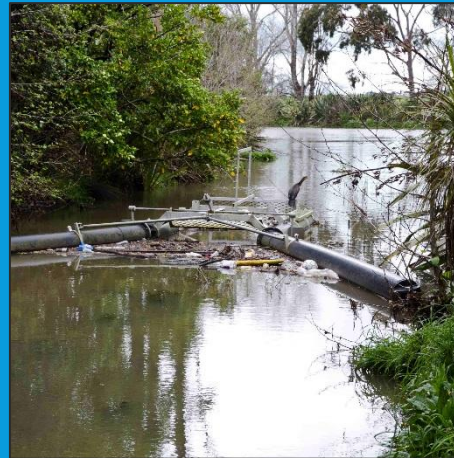


INFRASTRUCTURE

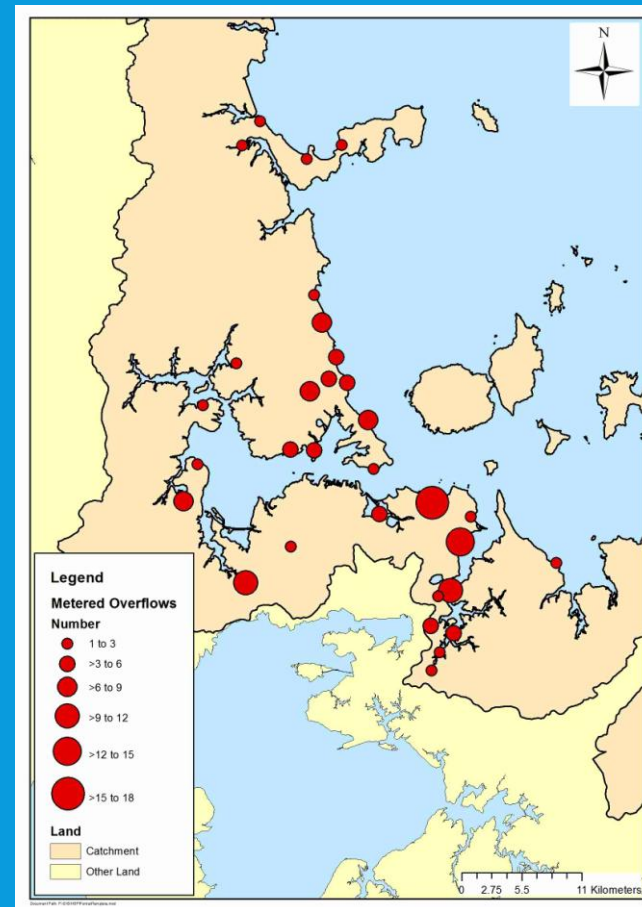
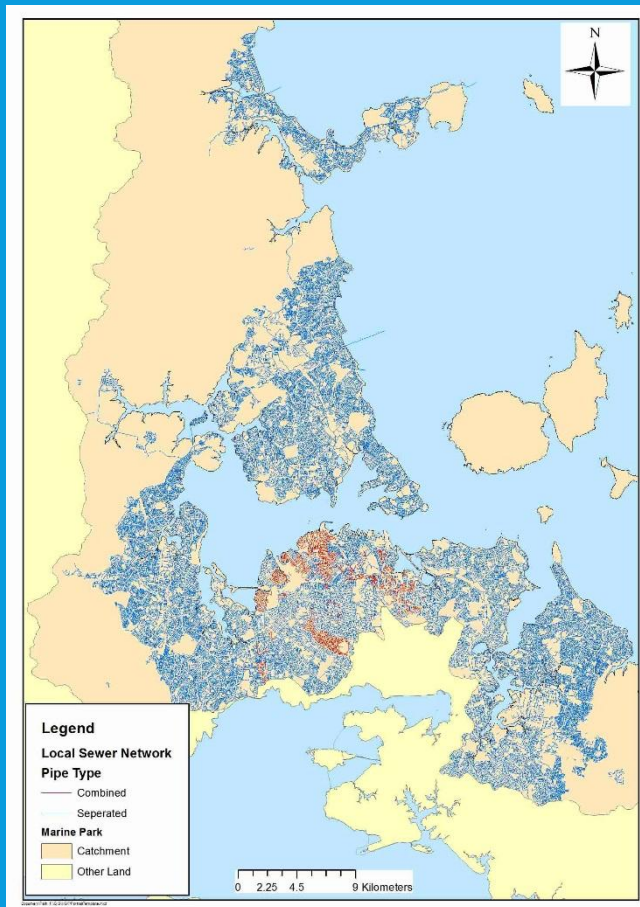


STORMWATER

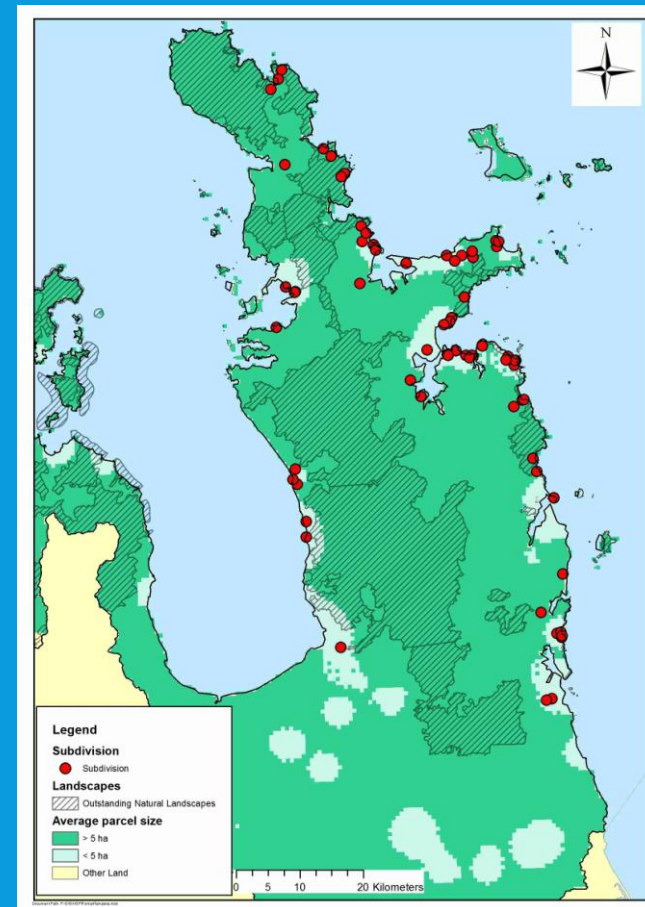
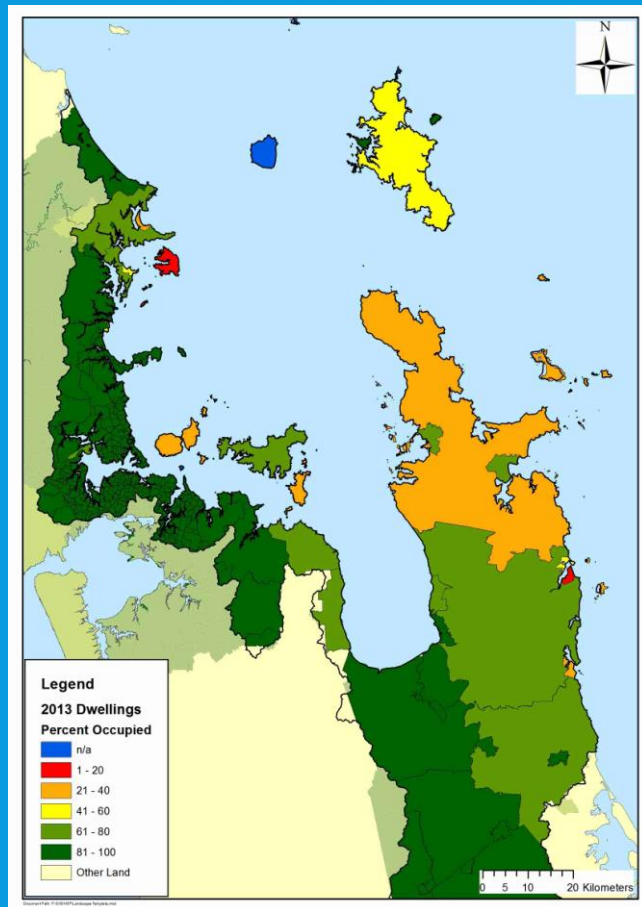
- Increasing imperviousness
- Existing contaminant issues
- Aging network in established areas
- Never designed to meet today's needs



WASTEWATER



COASTAL DEVELOPMENT

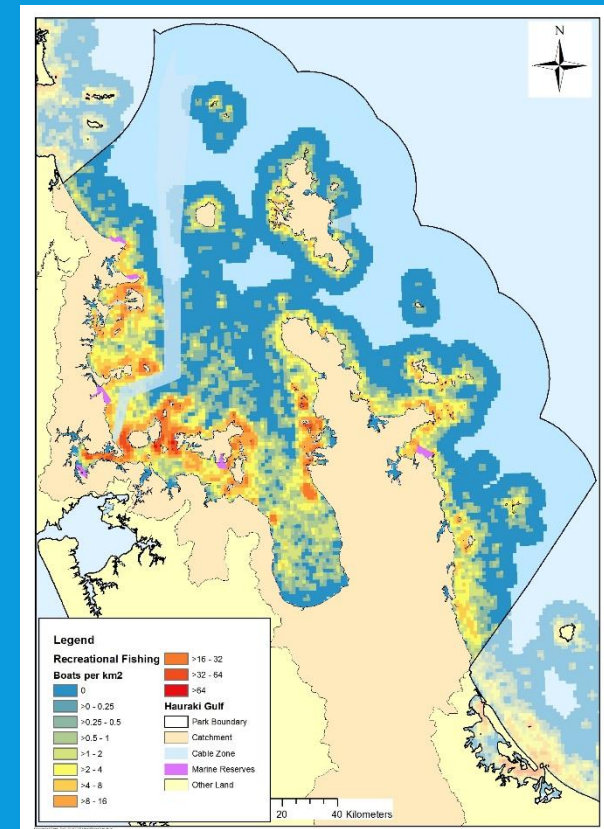
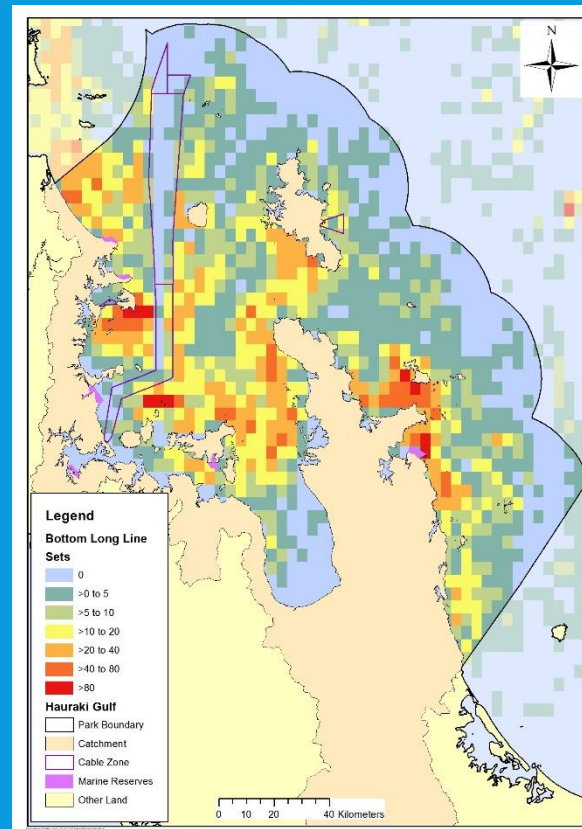
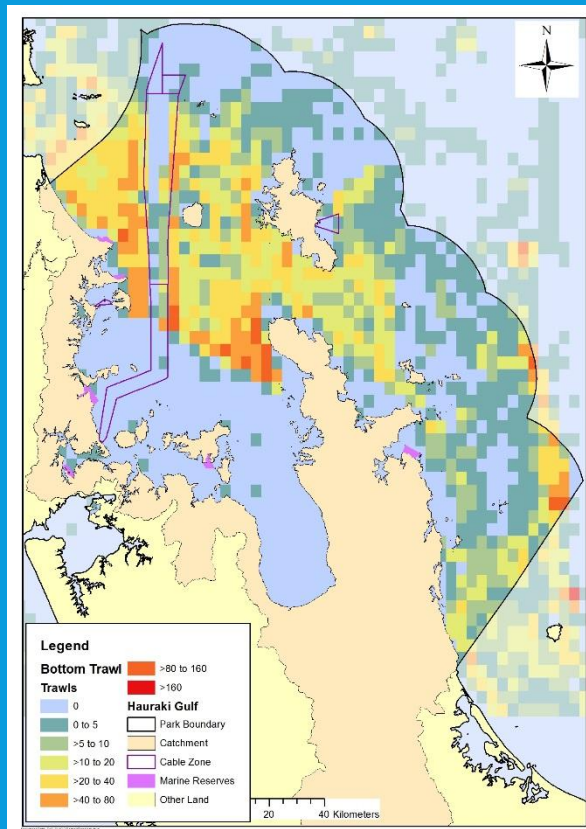


PORTS, BOATING AND MARINE INFRASTRUCTURE AND

- NZ's busiest port
- 11,000 Yachts
- 2,500 to 2,800 PWC
- 54,000 trailer boats
- 70,000 small craft
- 12,918 marina berths
- 5190 swing and pile moorings

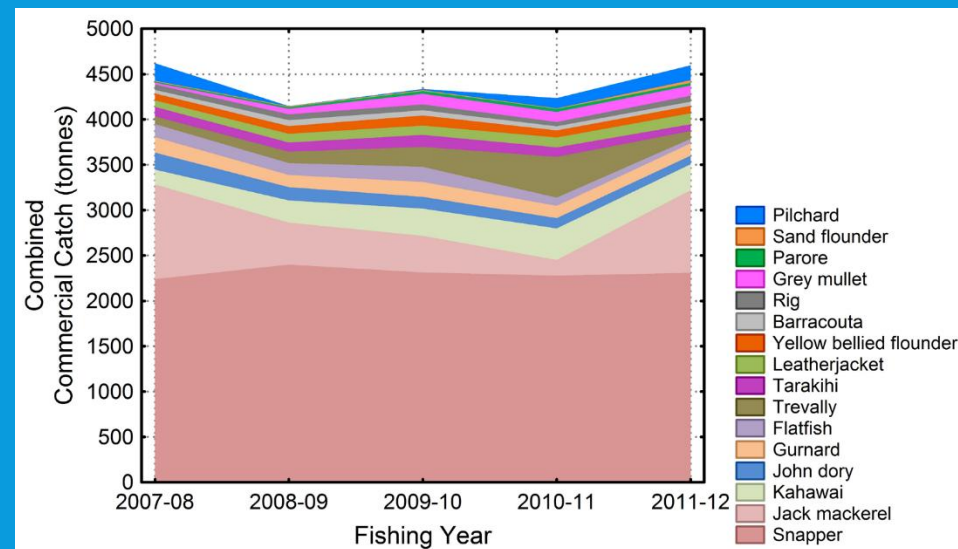


FISHING: EXTENT

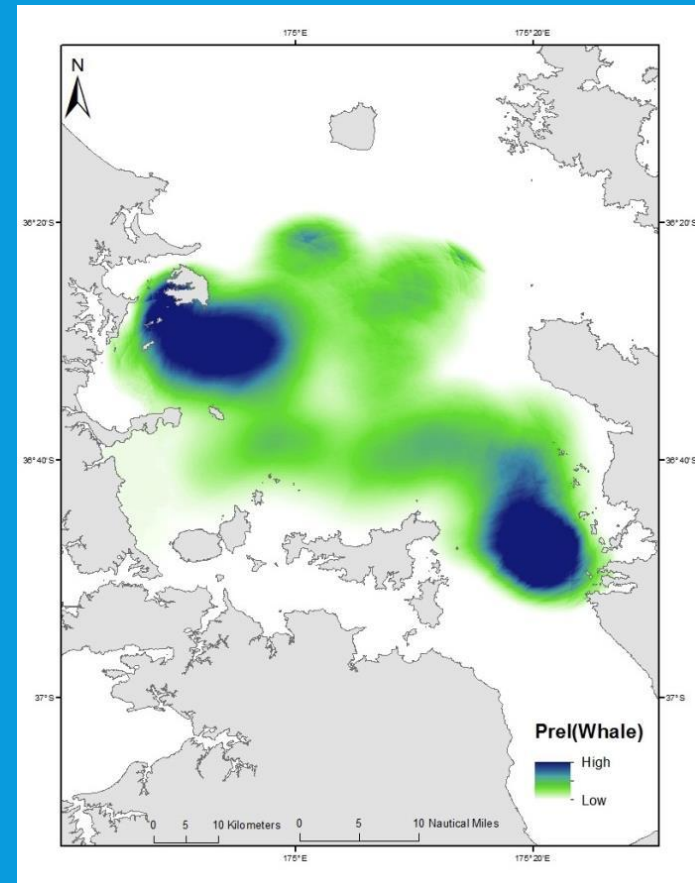
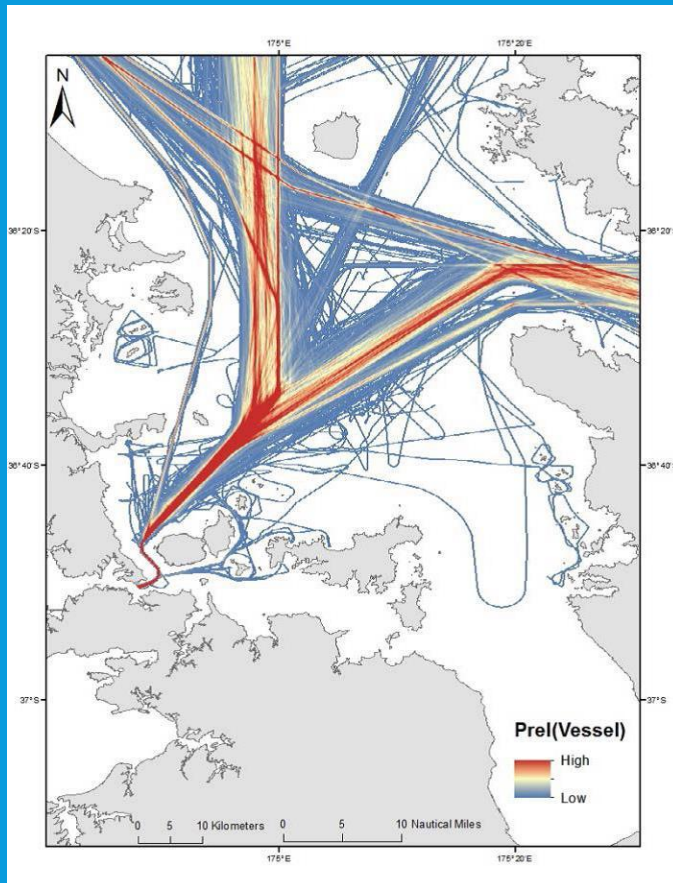


FISHING: EXTRACTION

- 2007-08 to 2011-12:
 - 4,150 to 4,620 tonnes (top 16 fish)
 - 105 to 134 tonnes (kina)
 - 33 to 73 tonnes (scallop meat)
- 2009-10 to 2013-14:
 - 104 to 115 tonnes (crayfish)
- 2011 to 2013:
 - 27,600 scallop dredges
 - 12,450 bottom trawls

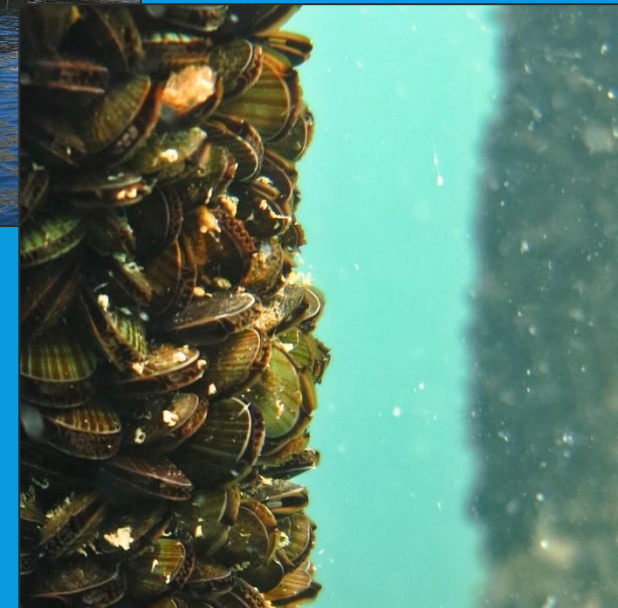
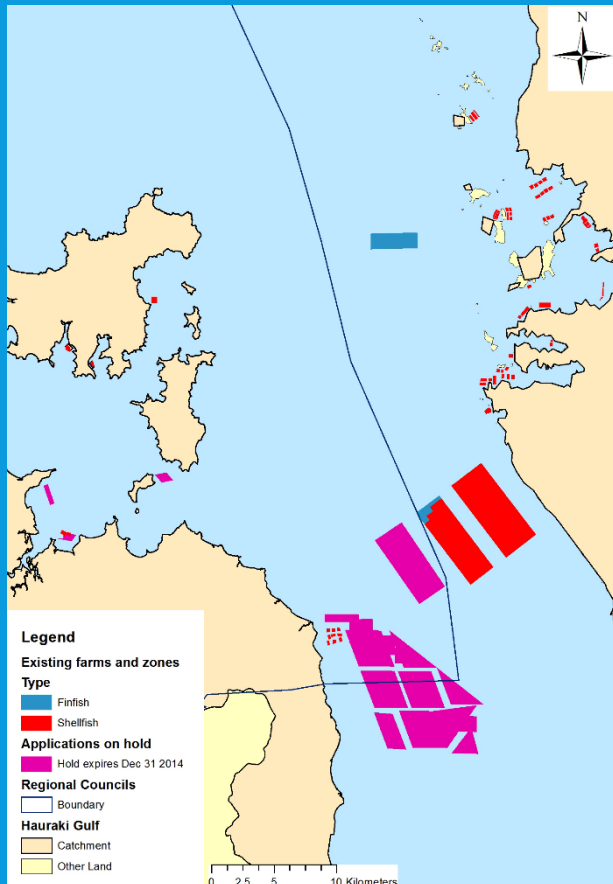


BRYDE'S WHALES AND SHIPPING

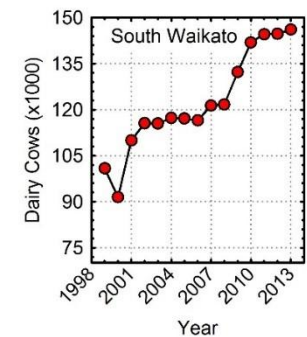
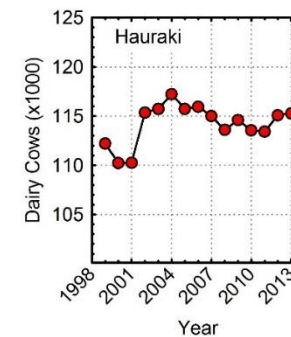
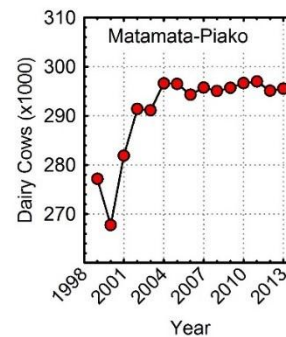
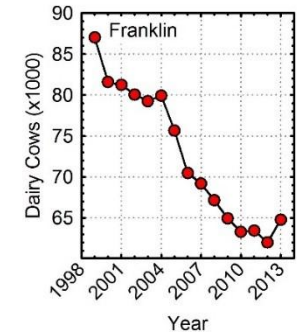
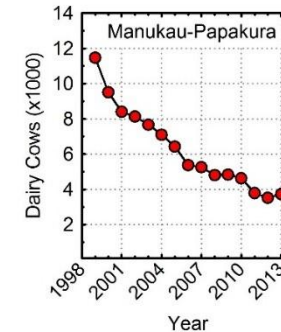
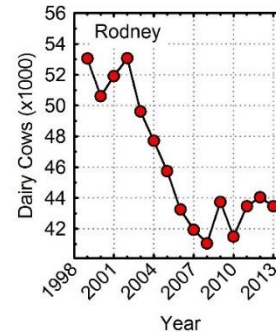
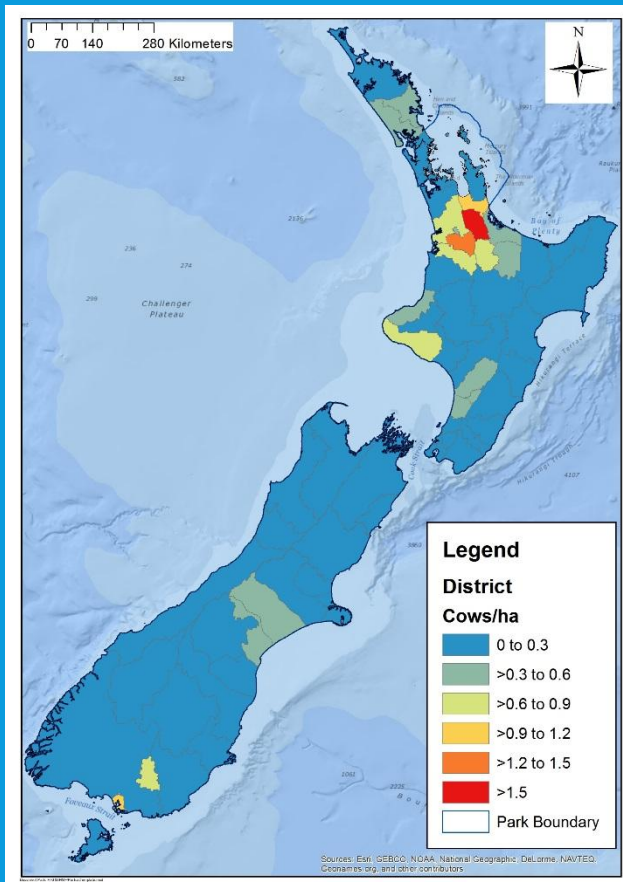


Behrens, S. (2009) Bryde's whales (*Balaenoptera brydei*) in the Hauraki Gulf and the effects of vessel traffic. Master of Science thesis, University of Auckland, Auckland.

AQUACULTURE



DAIRY FARMING



CONCLUSIONS

- Pressures already high
- Pressures increasing
- Pressures compounding