

Place co-brand logo[s]
here if required

Ministry for Primary Industries
Manatū Ahu Matua



Fisheries & Treaty settlements: Auckland

Terry Lynch

28 October 2014

Growing and Protecting New Zealand



www.mpi.govt.nz

Overview

- The Treaty Settlement process
- Content of Settlements
- Treaty Commitments in the Fisheries Act
- Fisheries and Aquaculture in Treaty Settlements
- Progress on Settlements in the Gulf
- Settlements affects on the use and values of the Gulf
- Changes to agencies responses
- How MPI provided for Māori values and interests

The Treaty settlement process

- Claimant negotiations mandate
- Agreement in Principle
- Deed of Settlement
- Ratification of Deed of Settlement
- Settlement Legislation
- Implementation

Detailed information on the settlement process is available on the Office of Treaty Settlements' website

General contents of Treaty settlements

- Crown apology
- Commercial redress
 - Financial redress
 - Crown properties
- Cultural redress
 - Statutory recognition
 - Cultural overlays
 - Co-management agreements (e.g. Waikato River co-management arrangements, Whanganui River arrangements)
 - Relationship protocols with Government departments
 - Regulatory change

Treaty commitments in the Fisheries Act 1996

- Stipulates that decision makers under the Act must:
 - recognise and provide for the input and participation of tangata whenua; and
 - have particular regard to kaitiakitanga when making sustainability decisions.



1992 Fisheries settlement

- The 1992 Fisheries settlement:
 - transferred 20% of all commercial fishing quota to Māori;
 - provided funding to purchase 50% of Sealord Products;
 - stipulates the creation of regulations that recognise and provide for customary food gathering and fishing grounds of special importance; and
 - provides for tangata whenua input into fisheries sustainability processes.



Aquaculture in Treaty settlements

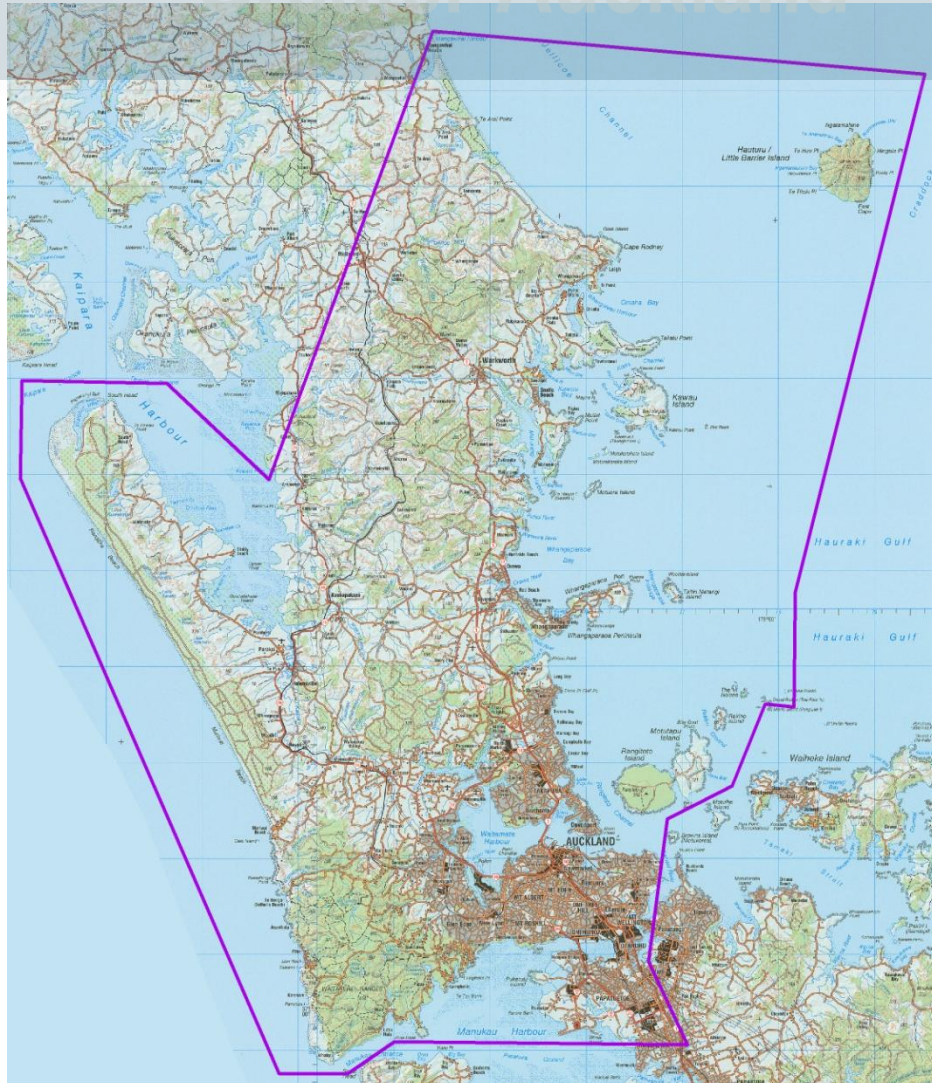
- Māori Commercial Aquaculture Claims Settlement Act 2004:
 - 20% of all aquaculture consents granted before 2004
 - 20% of all prospective aquaculture consents... or equivalent dollar value



Current status of historic Treaty settlements

- **Settlement Legislation:** Ngāti Whātua o Ōrākei
- **Deeds of Settlement:** Te Uri o Hau, Tamaki Collective, Ngāti Manuhiri
- **AIP:** Marutūahu Collective, Hauraki Collective

Greater Auckland



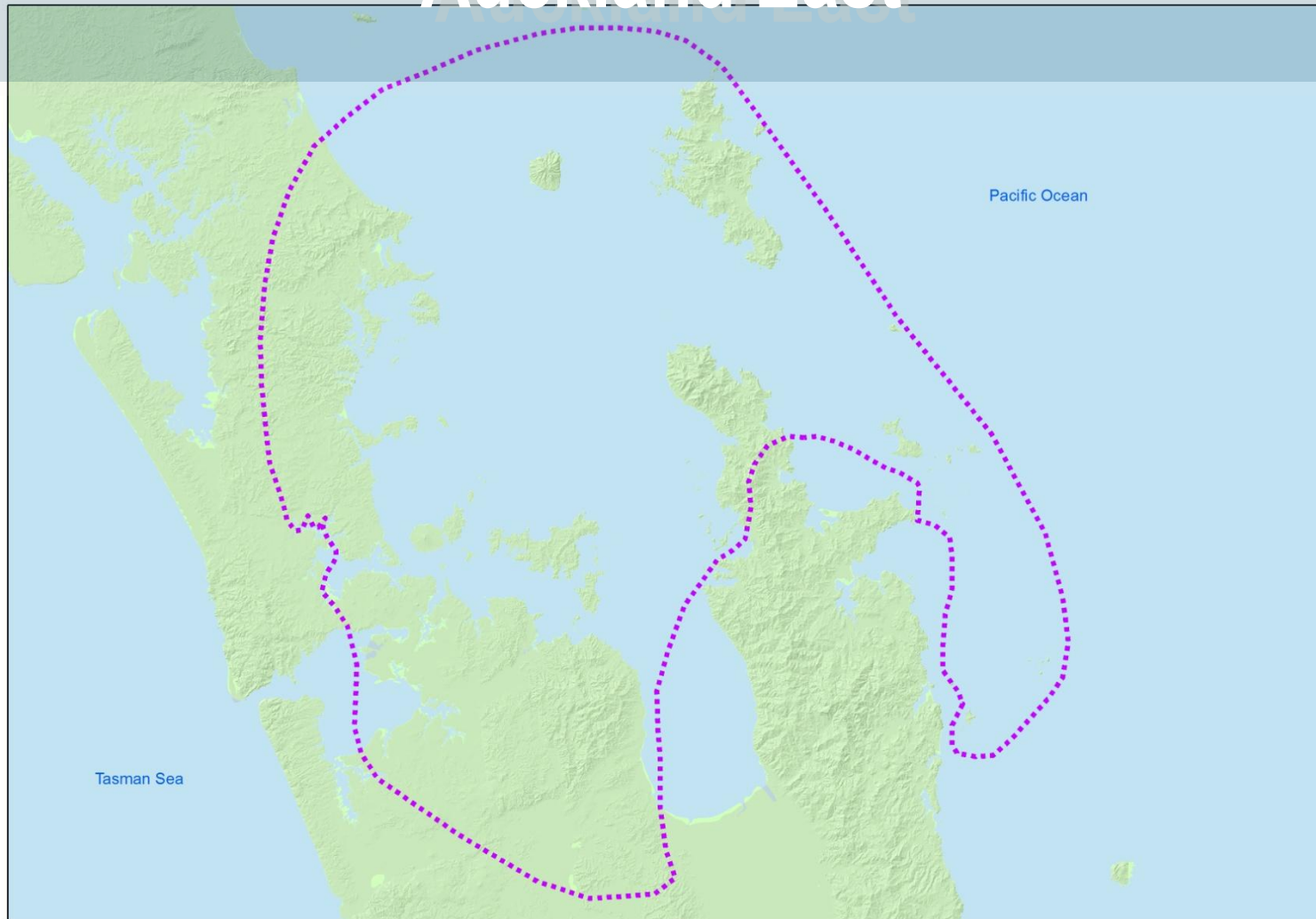
Great Barrier



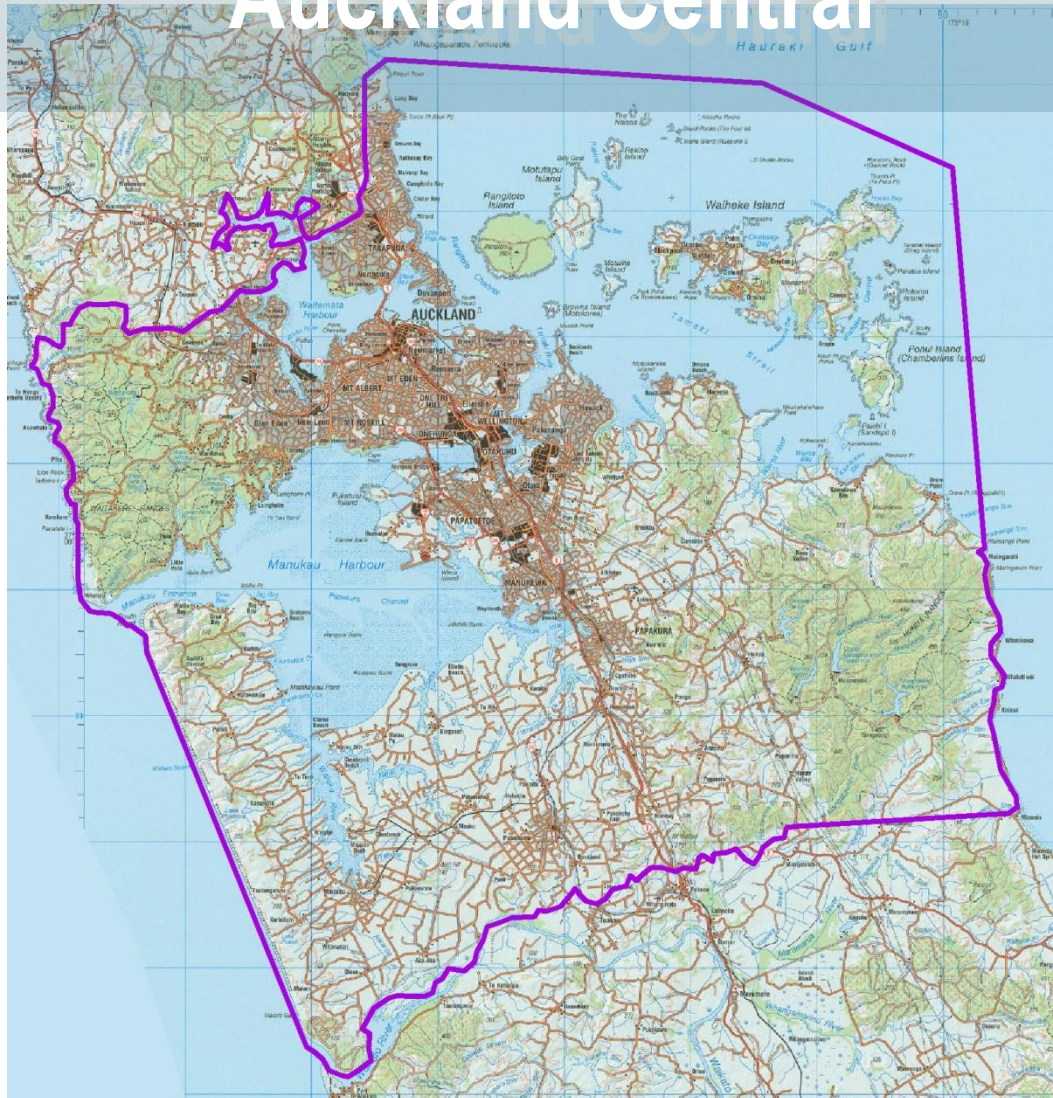
Whangaparaoa

The map displays the Whangaparaoa Peninsula and the Kaitiaki Peninsula, both outlined in purple. The Whangaparaoa Peninsula is located to the west of the Kaitiaki Peninsula. The Kaitiaki Peninsula is situated to the east of the Whangaparaoa Peninsula. The map shows the coastline, major roads, and various islands and peninsulas. The title 'Whangaparaoa' is prominently displayed at the top.

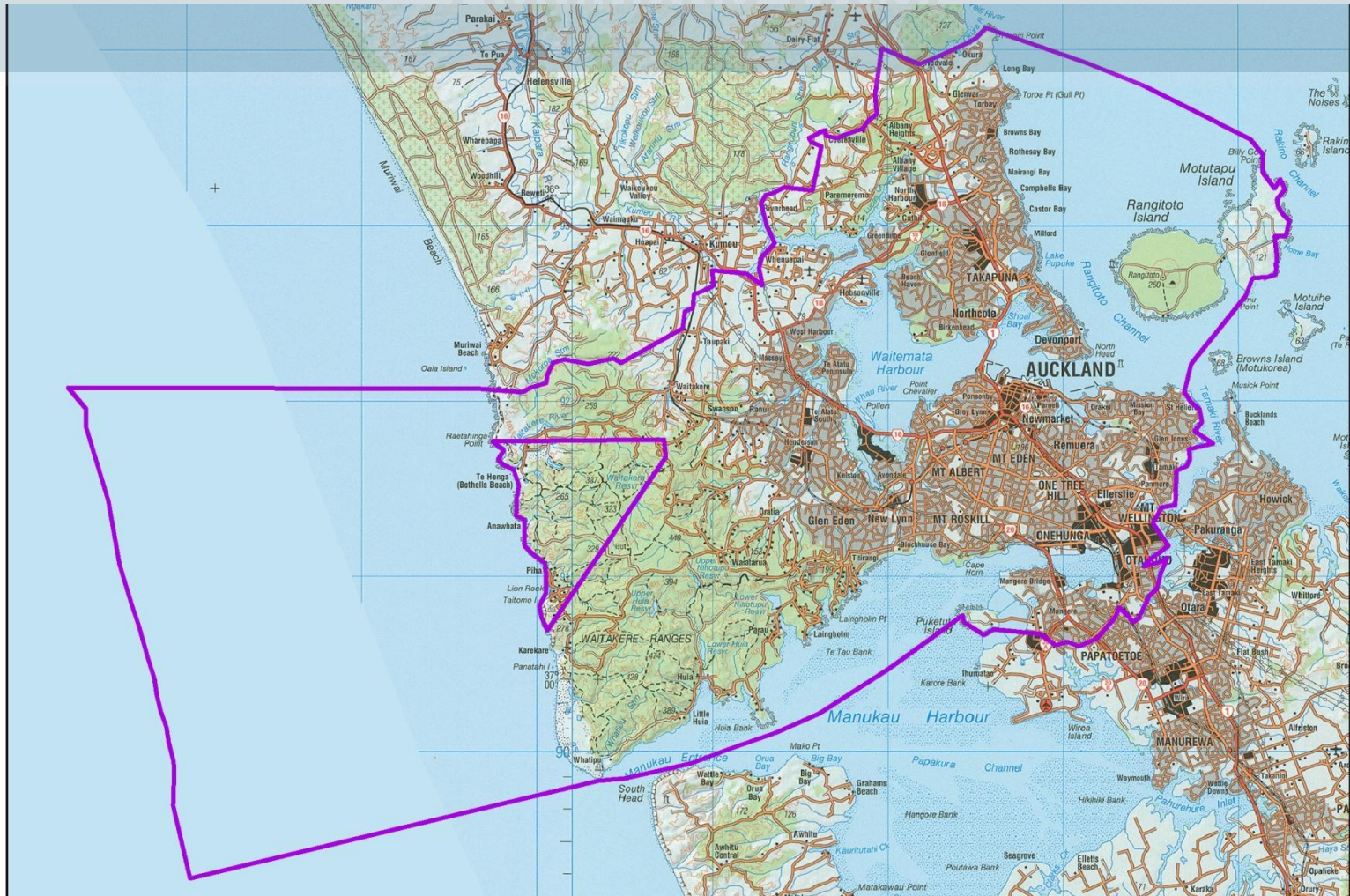
Auckland East



Auckland Central



Auckland West



Overlapping areas of interest

MPI recognition of Māori rights and interests

- MPI recognises and provides for Māori rights and interests through:
 - Primary Industries Protocols; and
 - assistance to iwi in developing iwi fisheries management plans, and forum fisheries plans ... to capture and coordinate iwi fisheries objectives and interests.

Fisheries planning

- Iwi involvement in setting objectives for fisheries.
- Particular regard to iwi plans as expressions of kaitiakitanga.
- Setting of catch limits.



Fisheries management

- Closure of shell fisheries at Umupuia.
- Closures of shell fisheries on Thames coast.
- Reduced bag limits for shellfish in Auckland urban area.
- Customary harvest provisions.

